



PLATE 38

- 1 *Peneroplis arietinus* (Batsch). Side view, Kaş, Antalya, Mediterranean, Station 89/6.00m.
- 2 *Peneroplis arietinus* (Batsch). Side view, Kaş, Antalya, Mediterranean, Station 92/24.00m.
- 3a *Peneroplis arietinus* (Batsch). Side view, Kalkan, Antalya, Mediterranean, Station 15/14.00m.
- 3b *Peneroplis arietinus* (Batsch). Detail view of the aperture, Kalkan, Antalya, Mediterranean, Station 15/14.00m.
- 4 *Peneroplis arietinus* (Batsch). Side view, Kaş, Antalya, Mediterranean, Station 32/20.00m.
- 5 *Peneroplis arietinus* (Batsch). Side view, Kaş, Antalya, Mediterranean, Station 47/12.00m.
- 6 *Peneroplis arietinus* (Batsch). Side view, Kaş, Antalya, Mediterranean, Station 41/6.00m.
- 7 *Peneroplis pertusus* (Forskal). Side view, Ayvalık, Aegean Sea, Core 2C/24–26cm.
- 8 *Peneroplis pertusus* (Forskal). Side view, Ayvalık, Aegean Sea, Core 4B/0–2cm.
- 9 *Peneroplis pertusus* (Forskal). Side view, Kekova, Antalya, Mediterranean, Station 92/6.00m.
- 10 *Peneroplis pertusus* (Forskal). Side view, Kekova, Antalya, Mediterranean, Station 92/6.00m.
- 11 *Peneroplis pertusus* (Forskal). Side view, Üçadalar, Antalya, Mediterranean, Station 123/12.00m.
- 12 *Peneroplis pertusus* (Forskal). Side view, Üçadalar, Antalya, Mediterranean, Station 123/12.00m.
- 13 *Peneroplis pertusus* (Forskal). Side view, Üçadalar, Antalya, Mediterranean, Station 123/12.00m.
- 14 *Peneroplis planatus* (Fichtel & Moll). Side view, Gulf of Kuşadası, Aegean Sea, Station 6/10.50m.

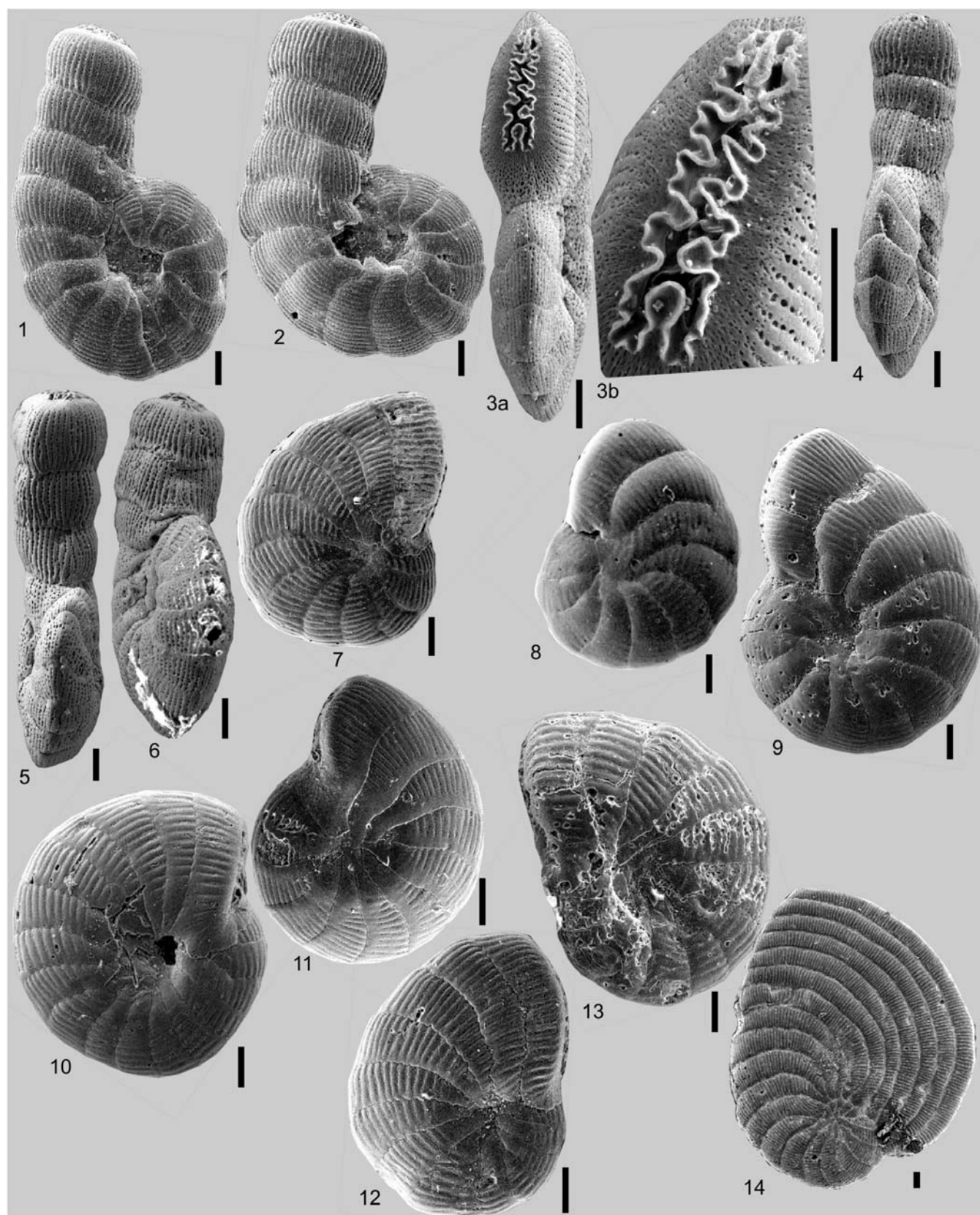


PLATE 39

- 1 *Peneroplis planatus* (Fichtel & Moll). Side view, Dikili Bay, Aegean Sea, Station 5/18.00m.
- 2 *Peneroplis planatus* (Fichtel & Moll). Side view, Dikili Bay, Aegean Sea, Station 5/18.00m.
- 3 *Peneroplis planatus* (Fichtel & Moll). Side view, Gulf of Gökova, Aegean Sea, Station 6/65.00m.
- 4 *Peneroplis planatus* (Fichtel & Moll). Side view, Ayvalık, Aegean Sea, Core 2C/0–2cm.
- 5 *Peneroplis planatus* (Fichtel & Moll). Side view, Ayvalık, Aegean Sea, Core 2C/0–2cm.
- 6 *Peneroplis planatus* (Fichtel & Moll). Side view, Kekova, Antalya, Mediterranean, Station 89/12.00m.
- 7 *Peneroplis planatus* (Fichtel & Moll). Side view, Üçadalar, Antalya, Mediterranean, Station 119/12.00m.
- 8 *Peneroplis planatus* (Fichtel & Moll). Side view, Kekova, Antalya, Mediterranean, Station 84/20.00m.
- 9 *Peneroplis planatus* (Fichtel & Moll). Side view, Kekova, Antalya, Mediterranean, Station 89/6.00m.
- 10 *Peneroplis planatus* (Fichtel & Moll). Side view, Üçadalar, Antalya, Mediterranean, Station 123/12.00m.
- 11 *Peneroplis planatus* (Fichtel & Moll). Side view, Üçadalar, Antalya, Mediterranean, Station 119/12.00m.
- 12 *Peneroplis planatus* (Fichtel & Moll). Side view, Kekova, Antalya, Mediterranean, Station 89/6.00m.
- 13 *Peneroplis planatus* (Fichtel & Moll). Side view, Üçadalar, Antalya, Mediterranean, Station 119/12.00m.
- 14 *Peneroplis planatus* (Fichtel & Moll). Side view, Kaş, Antalya, Mediterranean, Station 131/12.00m.
- 15a *Peneroplis planatus* (Fichtel & Moll). Side view, Kaş, Antalya, Mediterranean, Station 131/12.00m.
- 15b *Peneroplis planatus* (Fichtel & Moll). Detail of the aperture, Kaş, Antalya, Mediterranean, Station 131/12.00m.

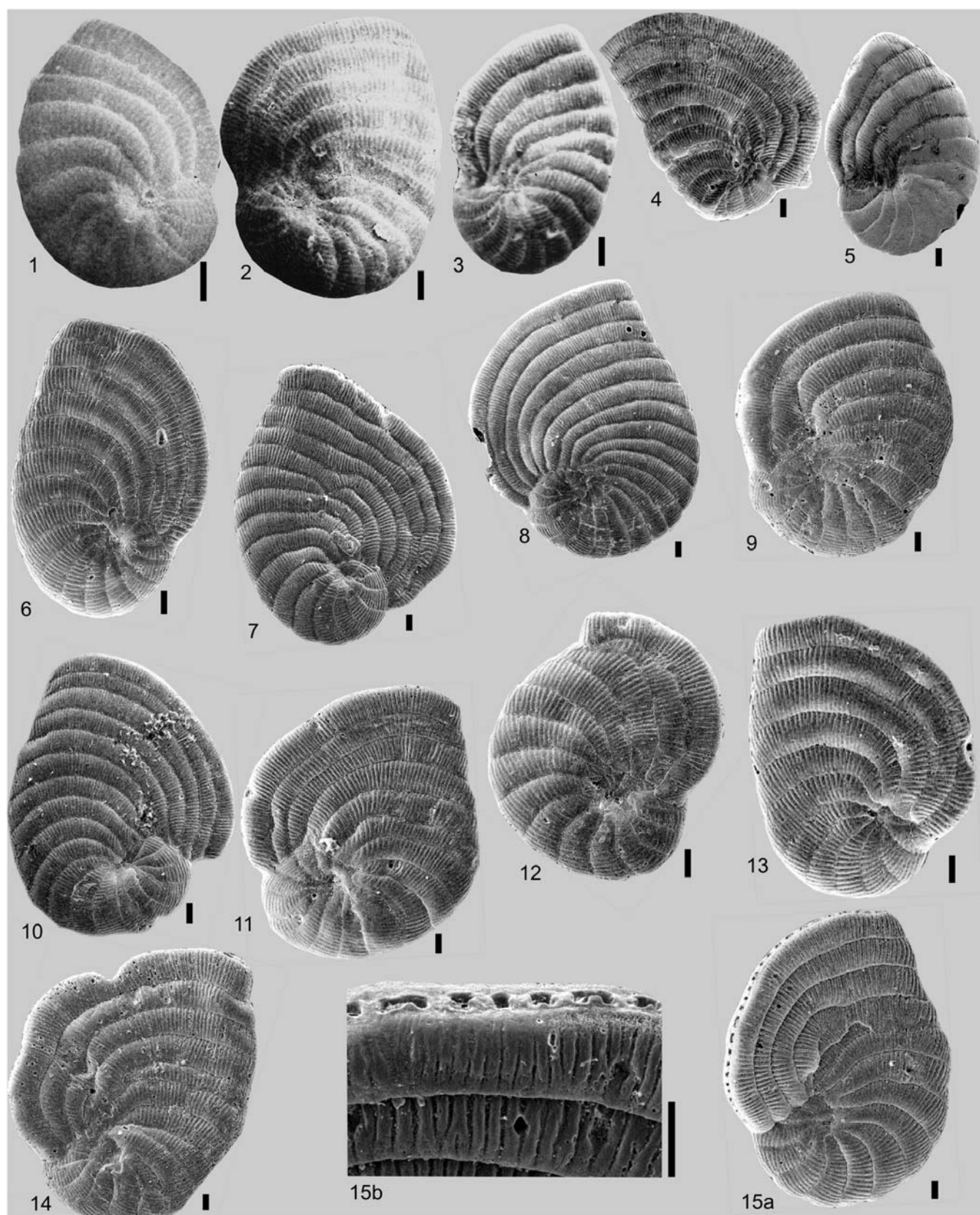


PLATE 40

- 1a *Cyclorbiculina compressa* (d'Orbigny). Side view, Kaş, Antalya, Mediterranean, Station 63/24.00m.
- 1b *Cyclorbiculina compressa* (d'Orbigny). Enlargement of side view, Kaş, Antalya, Mediterranean, Station 63/24.00m.
- 2a *Cyclorbiculina compressa* (d'Orbigny). Side view, Kaş, Antalya, Mediterranean, Station 60/21.00m.
- 2b *Cyclorbiculina compressa* (d'Orbigny). Enlargement of side view, Kaş, Antalya, Mediterranean, Station 60/21.00m.
- 2c *Cyclorbiculina compressa* (d'Orbigny). Enlargement of side view, Kaş, Antalya, Mediterranean, Station 60/21.00m.
- 3 *Amphisornus hemprichii* Ehrenberg. Side view, Kekova, Antalya, Mediterranean, Station 99/24.00m.
- 4a *Amphisornus hemprichii* Ehrenberg. Side view, Kekova, Antalya, Mediterranean, Station 99/24.00m.
- 4b *Amphisornus hemprichii* Ehrenberg. Peripheral view, Kekova, Antalya, Mediterranean, Station 99/24.00m.
- 4c *Amphisornus hemprichii* Ehrenberg. Enlargement of peripheral view, Kekova, Antalya, Mediterranean, Station 99/24.00m.
- 5a *Amphisornus hemprichii* Ehrenberg. Side view, Kekova, Antalya, Mediterranean, Station 99/24.00m.
- 5b *Amphisornus hemprichii* Ehrenberg. Peripheral view, Kekova, Antalya, Mediterranean, Station 99/24.00m.
- 5c *Amphisornus hemprichii* Ehrenberg. Enlargement of peripheral view, Kekova, Antalya, Mediterranean, Station 99/24.00m.
- 6 *Amphisornus hemprichii* Ehrenberg. Side view, Kekova, Antalya, Mediterranean, Station 99/24.00m.
- 7 *Sorites orbiculus* Ehrenberg. Side view, Ayvalık, Aegean Sea, Core 2C/0–2cm.
- 8 *Sorites orbiculus* Ehrenberg. Side view, Kekova, Antalya, Mediterranean, Station 89/6.00m.
- 9 *Sorites orbiculus* Ehrenberg. Side view, Kekova, Antalya, Mediterranean, Station 90/6.00m.
- 10 *Sorites orbiculus* Ehrenberg. Side view, Kekova, Antalya, Mediterranean, Station 91/6.00m.
- 11 *Sorites orbiculus* Ehrenberg. Side view, Kekova, Antalya, Mediterranean, Station 91/6.00m.

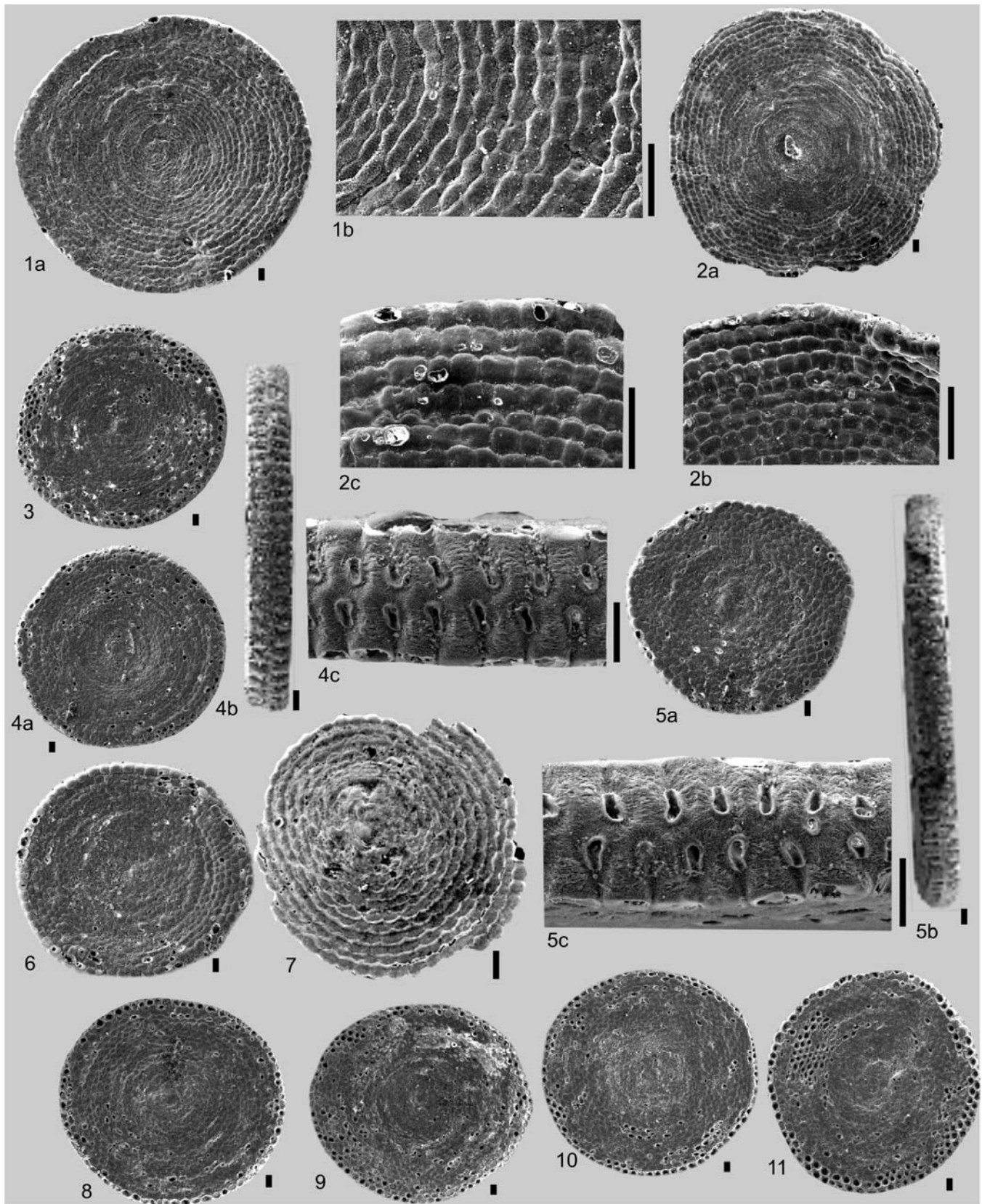


PLATE 41

1 *Amphisornus hemprichii* Ehrenberg individuals on *Halophila stipulacea* (Forskal), Kaş, Antalya, Mediterranean, 26.00m. Scale bar = 6mm.

2 *Amphisornus hemprichii* Ehrenberg individuals on *Cystoseira* sp. Kaş, Antalya, Mediterranean, 12.00m. Scale bar = 2mm.



1

2

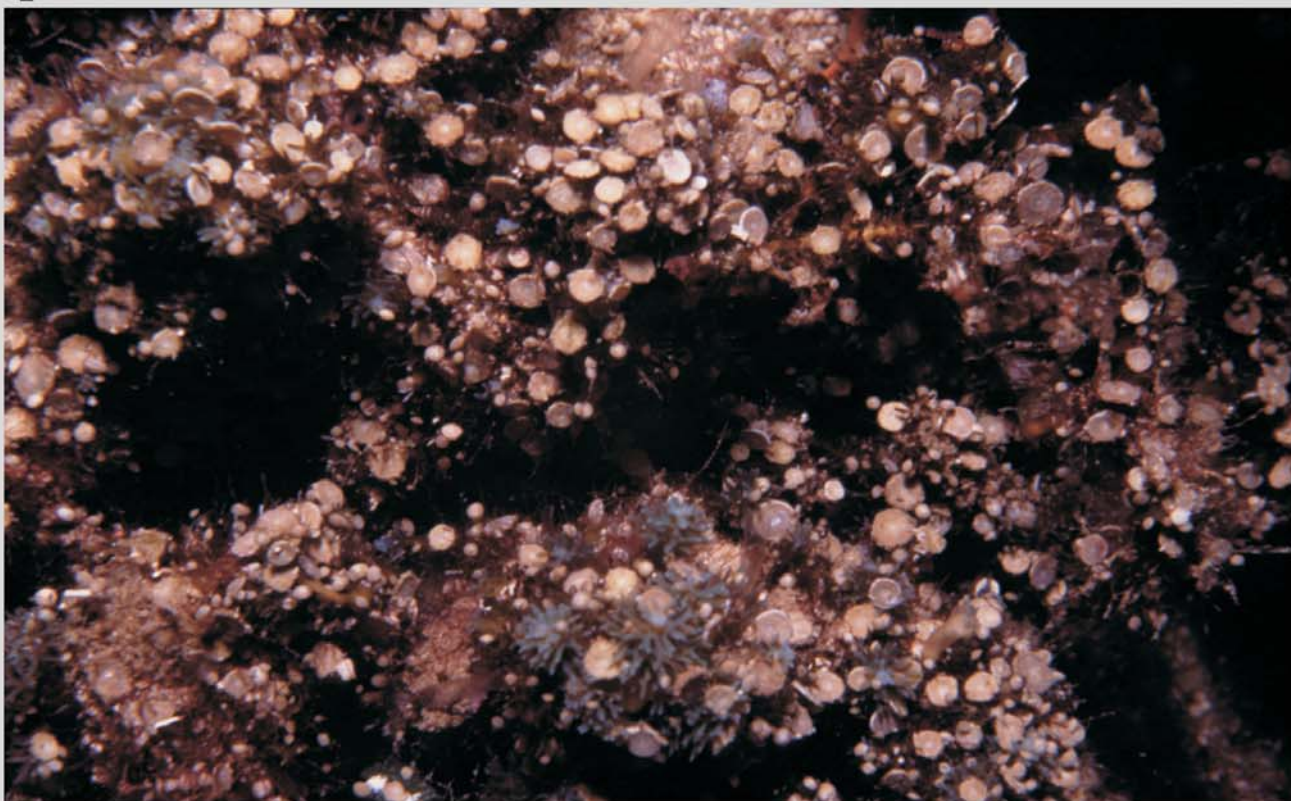


PLATE 42

1 *Amphisornus hemprichii* Ehrenberg individuals on dead *Posidonia oceanica* (Linné) leaves, Kaş, Antalya, Mediterranean, 8.00m. Scale bar = 16mm.

2 *Amphisornus hemprichii* Ehrenberg individuals on sea bottom, Kaş, Antalya, Mediterranean, 9.00m. Scale bar = 0.85.



1

2



PLATE 43

- 1 *Sorites orbiculus* Ehrenberg. Side view, Gulf of Antalya, Mediterranean, Station 17/22.00m.
- 2 *Sorites orbiculus* Ehrenberg. Side view, Kaş, Antalya, Mediterranean, Station 131/12.00m.
- 3 *Sorites orbiculus* Ehrenberg. Side view, Kaş, Antalya, Mediterranean, Station 60/21.00m.
- 4 *Sorites orbiculus* Ehrenberg. Side view, Kaş, Antalya, Mediterranean, Station 131/12.00m.
- 5 *Sorites orbiculus* Ehrenberg. Side view, Gulf of Kuşadası, Aegean Sea, Station 8/12.30m.
- 6 *Sorites orbiculus* Ehrenberg. Side view, Kaş, Antalya, Mediterranean, Station 131/12.00m.
- 7 *Sorites variabilis* Lacroix. Side view, Kaş, Antalya, Mediterranean, Station 49/24.00m.
- 8 *Sorites variabilis* Lacroix. Side view, Kaş, Antalya, Mediterranean, Station 49/14.00m.
- 9 *Sorites variabilis* Lacroix. Side view, Kaş, Antalya, Mediterranean, Station 131/12.00m.
- 10 *Sorites variabilis* Lacroix. Side view, Kaş, Antalya, Mediterranean, Station 131/12.00m.
- 11 *Sorites variabilis* Lacroix. Side view, Kaş, Antalya, Mediterranean, Station 131/12.00m.
- 12 *Sorites variabilis* Lacroix. Side view, Kaş, Antalya, Mediterranean, Station 131/12.00m.
- 13a *Sorites variabilis* Lacroix. Side and edge view, Kaş, Antalya, Mediterranean, Station 131/12.00m.
- 13b *Sorites variabilis* Lacroix. Enlargement of edge view, Kaş, Antalya, Mediterranean, Station 131/12.00m.
- 14 *Sorites variabilis* Lacroix. Side view, Gulf of Kuşadası, Aegean Sea, Station 23/9.30m.
- 15 *Sorites variabilis* Lacroix. Side view, Kaş, Antalya, Mediterranean, Station 131/12.00m.
- 16 *Dentalina albatrossi* (Cushman), Side view, Güllük Bay, Aegean Sea, Station 9/67.00m.
- 17 *Dentalina flintii* (Cushman). Side view, Gulf of Gemlik, Marmara Sea, Station 47/30.00m.

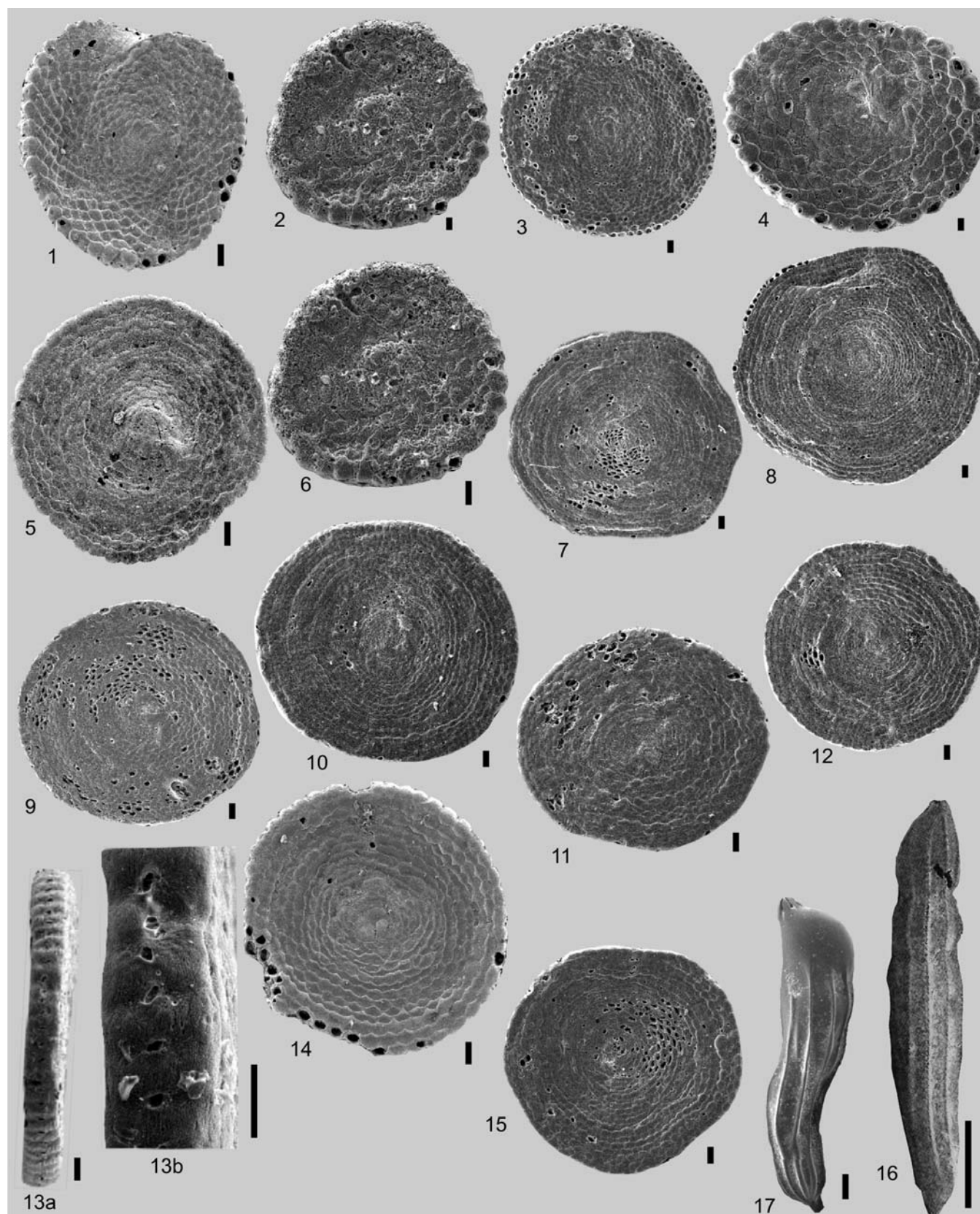


PLATE 44

- 1 *Dentalina flintii* (Cushman). Side view, Gulf of Gökova, Aegean Sea, Station 2/27.00m.
- 2a *Dentalina flintii* (Cushman). Side view, Marmaris Bay, Aegean Sea, Station 2/79.10m.
- 2b *Dentalina flintii* (Cushman). Enlargement of the apertural view, Marmaris Bay, Aegean Sea, Station 2/79.10m.
- 3 *Dentalina guttifera* d'Orbigny. Side view, Dardanelles, Station E2/48.00m.
- 4 *Dentalina inornata* d'Orbigny. Side view, Erdek Bay, Marmara Sea, Station 152/56.00m.
- 5a *Dentalina inornata* d'Orbigny. Side view, southern Bosphorus, Borehole BH-1/6.10m.
- 5b *Dentalina inornata* d'Orbigny. Side view, southern Bosphorus, Borehole BH-1/6.10m.
- 5c *Dentalina inornata* d'Orbigny. Side view, southern Bosphorus, Borehole BH-1/6.10m.
- 6a *Dentalina inornata* d'Orbigny. Side view, Gulf of Saros, Aegean Sea, Station 13/156.00m.
- 6b *Dentalina inornata* d'Orbigny. Enlargement view of the test, Gulf of Saros, Aegean Sea, Station 13/156.00m.
- 6c *Dentalina inornata* d'Orbigny. Enlargement of the apertural view, Gulf of Saros, Aegean Sea, Station 13/156.00m.
- 7 *Dentalina mucronata* Neugeboren. Side view, Gulf of Edremit, Aegean Sea, Station 2/100.40m.
- 8 *Laevidentalina inflexa* (Reuss). Side view, Gökçeada-Bozcaada-Çanakkale Triangle, Aegean Sea, Station 10/21.40m.
- 9 *Nodosaria raphanus* (Linné). Side view, Gulf of Saros, Aegean Sea, Station 4/50.90m.
- 10 *Pseudonodosaria comatula* (Cushman). Side view, Gulf of Saros, Aegean Sea, Station 4/50.90m.
- 11 *Pseudonodosaria comatula* (Cushman). Side view, Gökçeada-Bozcaada-Çanakkale Triangle, Aegean Sea, Station 6/7.00m.

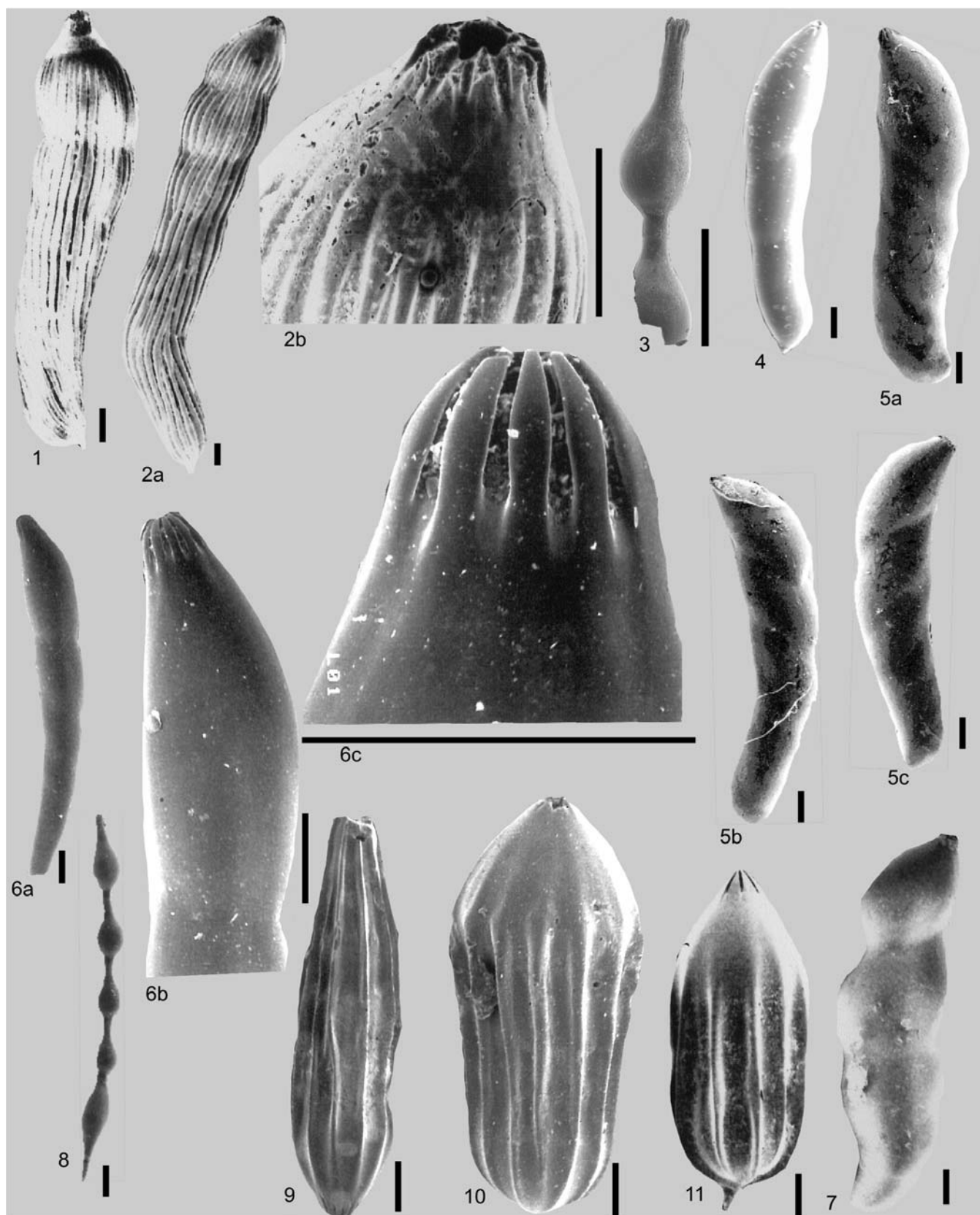


PLATE 45

- 1 *Pyramidulina catesbyi* (d'Orbigny). Side view, Gulf of Kuşadası, Aegean Sea, Station 30/22.30m.
- 2 *Pyramidulina perversa* (Schwager). Side view, Gulf of İzmir, Aegean Sea, Station 11/24.00m.
- 3 *Lenticulina calcar* (Linné). Side view, Gulf of Antalya, Mediterranean, Station 15/101.00m.
- 4 *Lenticulina cultrata* (Montfort). Side view, Gulf of Saros, Harmantaşı, Aegean Sea, Line 1/35.00m.
- 5 *Lenticulina cultrata* (Montfort). Side view, Gulf of Kuşadası, Aegean Sea, Station 40/19.50m.
- 6a *Lenticulina gibba* (d'Orbigny). Side view, Gulf of İzmit, Marmara Sea, Borehole S3/79.75–80.20m.
- 6b *Lenticulina gibba* (d'Orbigny). Enlargement of the apertural view, Gulf of İzmit, Marmara Sea, Borehole S3/79.75–80.20m.
- 7 *Lenticulina gibba* (d'Orbigny). Side view, Gulf of Antalya, Mediterranean, Station 21/60.00m.
- 8 *Lenticulina orbicularis* (d'Orbigny). Side view, Gulf of Gökova, Aegean Sea, Station 6/65.00m.
- 9 *Neolenticulina peregrina* (Schwager). Side view, Dardanelles, Station E1/44.00m.
- 10 *Saracenaria italica* DeFrance. Side view, Gulf of Datça, Aegean Sea, Station 1/252.30m.
- 11a *Amphicoryna scalaris* (Batsch). Microspheric individu, side view, Gulf of Gökova, Aegean Sea, Station 7/78.30m.
- 11b *Amphicoryna scalaris* (Batsch). Detail view of the test, Gulf of Gökova, Aegean Sea, Station 7/78.30m.
- 11c *Amphicoryna scalaris* (Batsch). Detail view of the test, Gulf of Gökova, Aegean Sea, Station 7/78.30m.
- 12 *Amphicoryna scalaris* (Batsch). Microspheric individual, side view, Gulf of Datça, Aegean Sea, Station 1/252.30m.
- 13 *Amphicoryna scalaris* (Batsch). Microspheric individual, side view, Gulf of Datça, Aegean Sea, Station 9/147.00m.
- 14 *Amphicoryna scalaris* (Batsch). Side view, Dardanelles, Station 7/68.00m.
- 15 *Amphicoryna scalaris* (Batsch). Side view, Dardanelles, Station 1/10.00m.
- 16 *Amphicoryna scalaris* (Batsch). Side view, Gulf of Saros, Aegean Sea, Station 13/156.00m.
- 17 *Amphicoryna scalaris* (Batsch). Side view, Gulf of Saros, Aegean Sea, Station 40/77.30m.
- 18 *Amphicoryna scalaris* (Batsch). Side view, Gulf of Gökova, Aegean Sea, Station 5/34.50m.

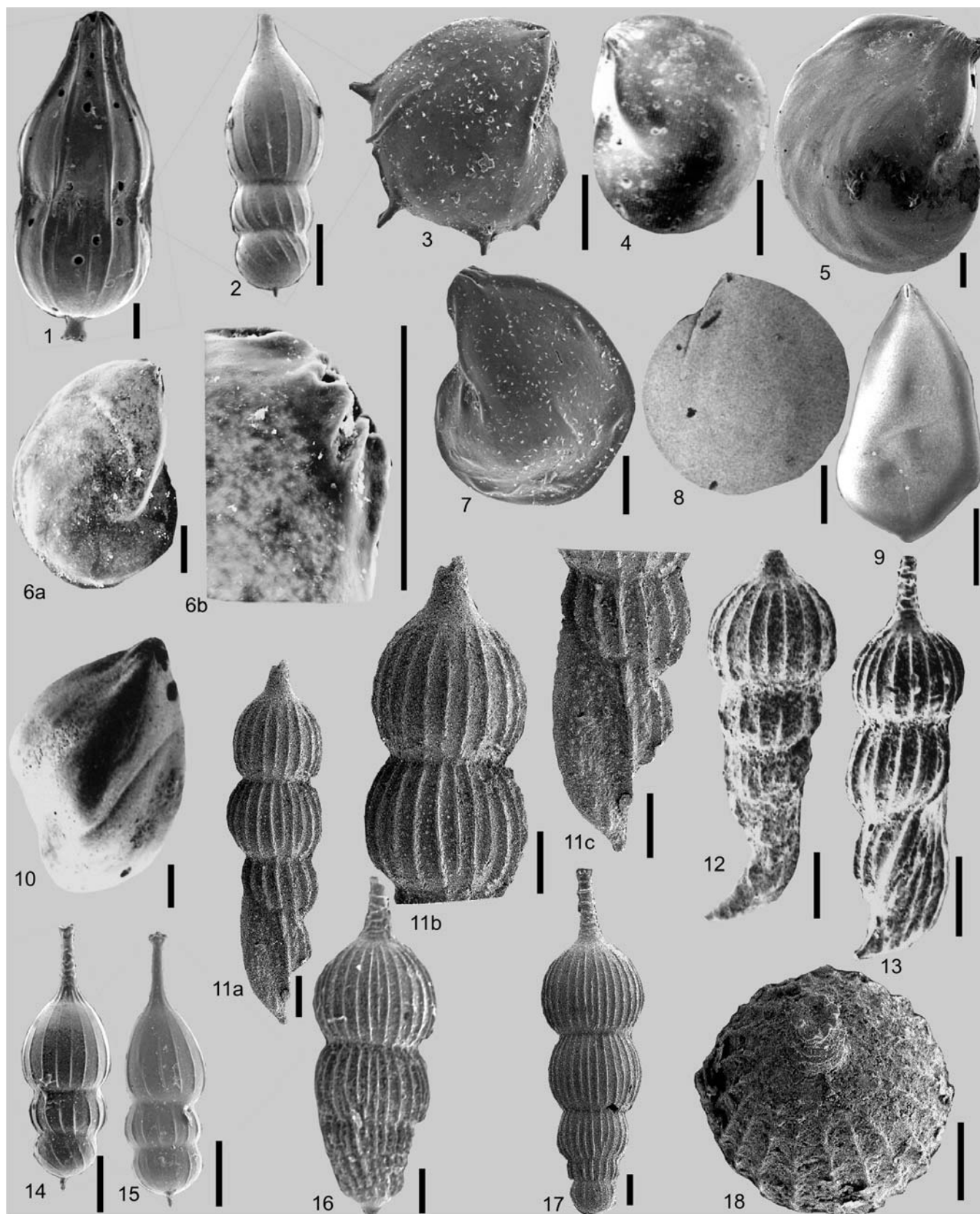


PLATE 46

- 1a *Amphicoryna scalaris* (Batsch). Side view, Gulf of Datça, Aegean Sea, Station 1/252.30m.
- 1b *Amphicoryna scalaris* (Batsch). Detail view of the neck and aperture, Gulf of Datça, Aegean Sea, Station 1/252.30m.
- 2 *Amphicoryna scalaris* (Batsch). Side view, Gulf of Saros, Aegean Sea, Station 13/156.00m.
- 3 *Amphicoryna scalaris* (Batsch). Side view, Gulf of Saros, Aegean Sea, Station 40/77.30m.
- 4 *Amphicoryna scalaris* (Batsch). Side view, Gulf of Antalya, Mediterranean, Station 5/160.00m.
- 5 *Amphicoryna scalaris* (Batsch). Side view, Gulf of Antalya, Mediterranean, Station 5/160.00m.
- 6 *Amphicoryna scalaris* (Batsch). Side view, last chamber, neck and aperture, Gulf of Saros, Aegean Sea, Station 22/118.50m.
- 7 *Amphicoryna scalaris* (Batsch). Enlargement of the neck and apertural view, Gulf of Gökova, Aegean Sea, Station 5/34.50m.
- 8a *Amphicoryna scalaris* (Batsch). Side view, Gulf of Saros, Aegean Sea, Station 28/115.50m.
- 8b *Amphicoryna scalaris* (Batsch). Side view, Enlargement of first loges, Gulf of Saros, Aegean Sea, Station 28/115.50m.
- 9 *Astacolus crepidulus* (Fichtel & Moll). Side view, Gulf of Saros, Aegean Sea, Station 54/94.50m.
- 10 *Astacolus crepidulus* (Fichtel & Moll). Side view, Marmaris Bay, Aegean Sea, Station 1/106.40m.
- 11a *Astacolus insolithus* (Schwager). Side view, Gulf of Gökova, Aegean Sea, Station 3/80.40m.
- 11b *Astacolus insolithus* (Schwager). Apertural view, Gulf of Gökova, Aegean Sea, Station 3/80.40m.
- 12 *Astacolus sublegumen* (Parr). Side view, Gulf of Edremit, Aegean Sea, Station 18/29.00m.
- 13 *Marginulina costata* (Batsch). Side view, Gökçeada-Bozcaada-Çanakkale Triangle, Aegean Sea, Station 13/79.00m.
- 14a *Marginulina costata* (Batsch). Side view, Gulf of Datça, Aegean Sea, Station 7/56.40m.
- 14b *Marginulina costata* (Batsch). Enlargement of the apertural view, Gulf of Datça, Aegean Sea, Station 7/56.40m.

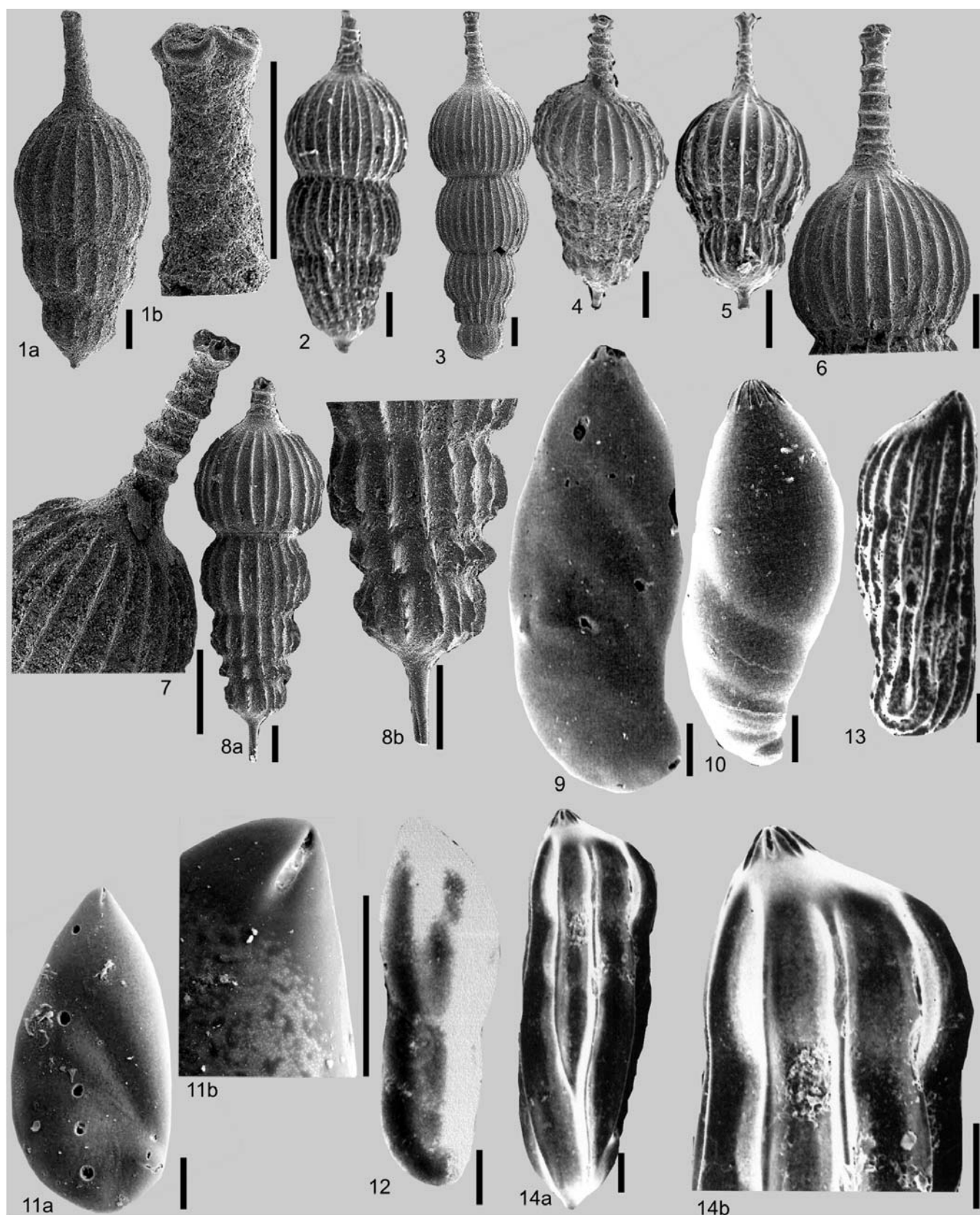


PLATE 47

- 1 *Hyalinonetrion gracillimum* (Seguenza). Side view, Northern Marmara Sea, Station 97/27.00m.
- 2 *Lagena doveyensis* Haynes. Side view, Northern Marmara Sea, Station 59/17.00m.
- 3a *Lagena interrupta* Williamson. Side view, Golden Horn, İstanbul, Borehole A7/ 55.35–55.75m.
- 3b *Lagena interrupta* Williamson. Enlargement of the neck and apertural view, Golden Horn, İstanbul, Borehole A7/55.35–55.75m.
- 4 *Lagena laevis* (Montagu). Side view, Dardanelles, Station E1/44.00m.
- 5 *Lagena nebulosa* Cushman. Side view, Gökçeada-Bozcaada-Çanakkale Triangle, Aegean Sea, Station 131/23.80m.
- 6 *Lagena semistriata* Williamson. Side view, Gulf of Antalya, Mediterranean, Station 10/18.00m.
- 7a *Lagena striata* (d'Orbigny). Side view, Gulf of Saros, Aegean Sea, Station 13/153.00m.
- 7b *Lagena striata* (d'Orbigny). Enlargement of the neck, Gulf of Saros, Aegean Sea, Station 13/153.00m.
- 8 *Lagena striata* (d'Orbigny). Side view, Dardanelles, Station 2/35.00m.
- 9 *Lagena striata* (d'Orbigny). Side view, Gökçeada-Bozcaada-Çanakkale Triangle, Aegean Sea, Station 11/21.20m.
- 10 *Lagena strumosa* Reuss. Side view, Gulf of Antalya, Mediterranean, Station 5/160.00m.
- 11 *Lagena strumosa* Reuss. Side view, Dardanelles, Station 1/10.00m.
- 12 *Lagena strumosa* Reuss. Side view, Dardanelles, Station 1/25.00m.
- 13 *Lagena strumosa* Reuss. Side view, Dardanelles, Station E1/44.00m.
- 14 *Globulina myristiformis* (Williamson). Side view, Gulf of Saros, Aegean Sea, Station 14/84.00m.
- 15 *Polymorphina* sp. 1. Side view, Dikili Bay, Aegean Sea, Station 2/39.50m.
- 16 *Polymorphina* sp. 2. Side view, Gulf of Gökova, Aegean Sea, Station 4/46.20m.

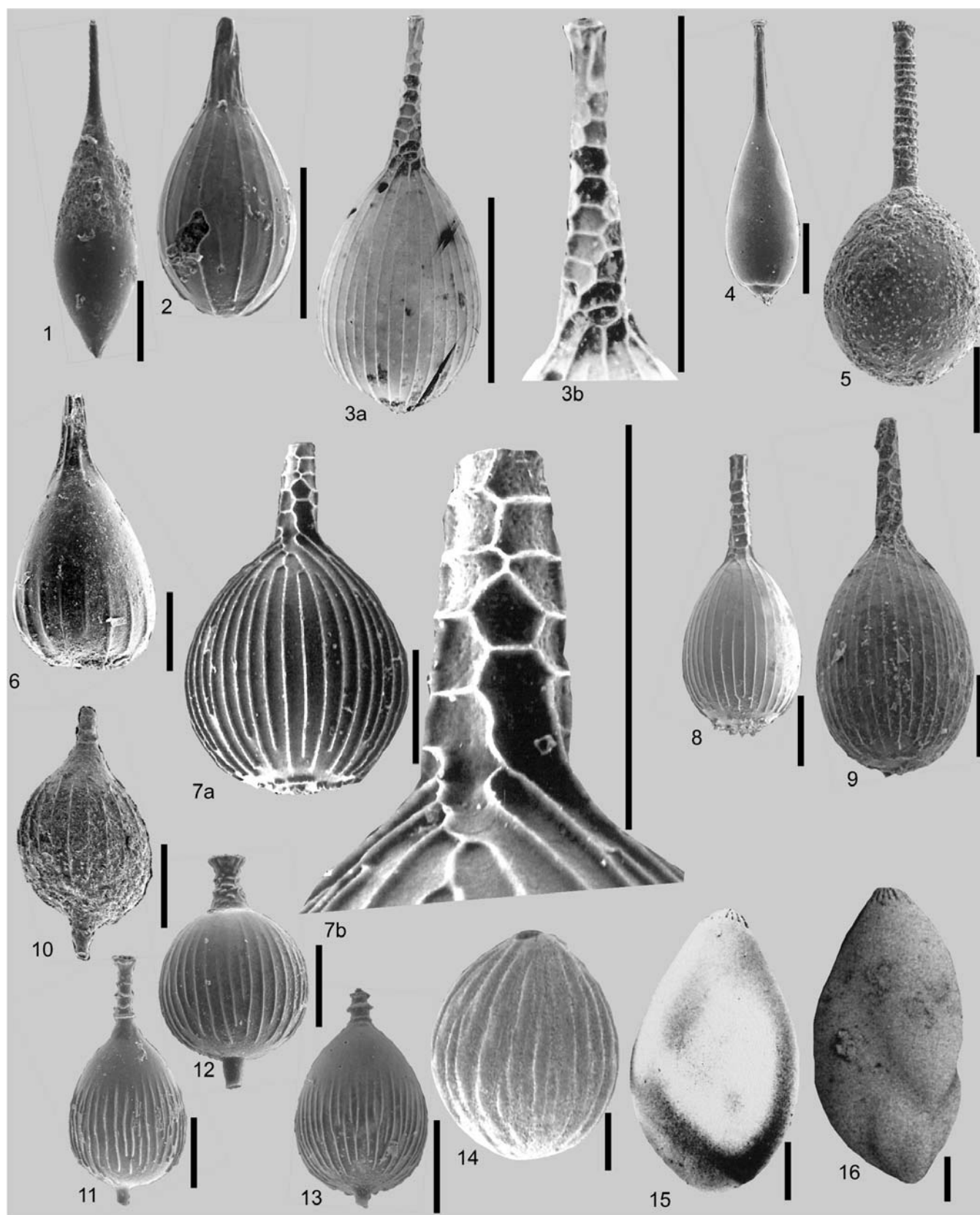


PLATE 48

- 1 *Polymorphina fistulosa* Cushman. Side view, Dardanelles, Station 1/62.00m.
- 2 *Polymorphina fistulosa* Cushman. Side view, Dardanelles, Station 1/62.00m.
- 3 *Polymorphina* sp. 3. Side view, Gökçeada, Aegean Sea, Station 29/11.00m.
- 4 *Polymorphina* sp. 5. Side view, Kekova, Antalya, Mediterranean, Station 81/24.00m.
- 5 *Polymorphina* sp. 6. Side view, Kekova, Antalya, Mediterranean, Station 79/24.00m.
- 6 *Polymorphina* sp. 7. Side view, south of Bosphorus, Station 91/24.00m.
- 7 *Cushmanina striatopunctata* (Parker & Jones). Side view, Dardanelles, Station 2/35.00m.
- 8 *Favulina hexagona* (Montagu). Side view, Dardanelles, Station 7/68.00m.
- 9 *Favulina hexagona* (Montagu). Side view, Gökçeada-Bozcaada-Çanakkale Triangle, Aegean Sea, Station 76/45.00m.
- 10 *Favulina scalariformis* (Williamson). Side view, Dardanelles, Station 7/68.00m.
- 11a *Favulina squamosa* (Montagu). Side view, Gulf of Edremit, Aegean Sea, Station 3/230.00m.
- 11b *Favulina squamosa* (Montagu). Side view, enlargement of the test, Gulf of Edremit, Aegean Sea, Station 3/230.00m.
- 12 *Oolina acuticosta* (Reuss). Side view, Erdek Bay, Marmara Sea, Station 166/46.00m.
- 13 *Fissurina eburnean* (Buchner). Side view, Dardanelles, Station 7/68.00m.
- 14 *Fissurina lucida* (Williamson). Side view, Gökçeada-Bozcaada-Çanakkale Triangle, Aegean Sea, Station 34/39.00m.
- 15 *Fissurina lucida* (Williamson). Side view, Erdek Bay, Marmara Sea, Station 163/52.00m.
- 16 *Fissurina neptunii* (Buchner). Side view, Gökçeada-Bozcaada-Çanakkale Triangle, Aegean Sea, Station 130/80.00m.
- 17 *Fissurina orbignyana* Seguenza. Side view, Dardanelles, Station 7/68.00m.
- 18 *Fissurina orbignyana* Seguenza. Side view, Dardanelles, Station 7/68.00m.
- 19 *Fissurina orbignyana* Seguenza. Side view, Gökçeada-Bozcaada-Çanakkale Triangle, Aegean Sea, Station 104/28.00m.

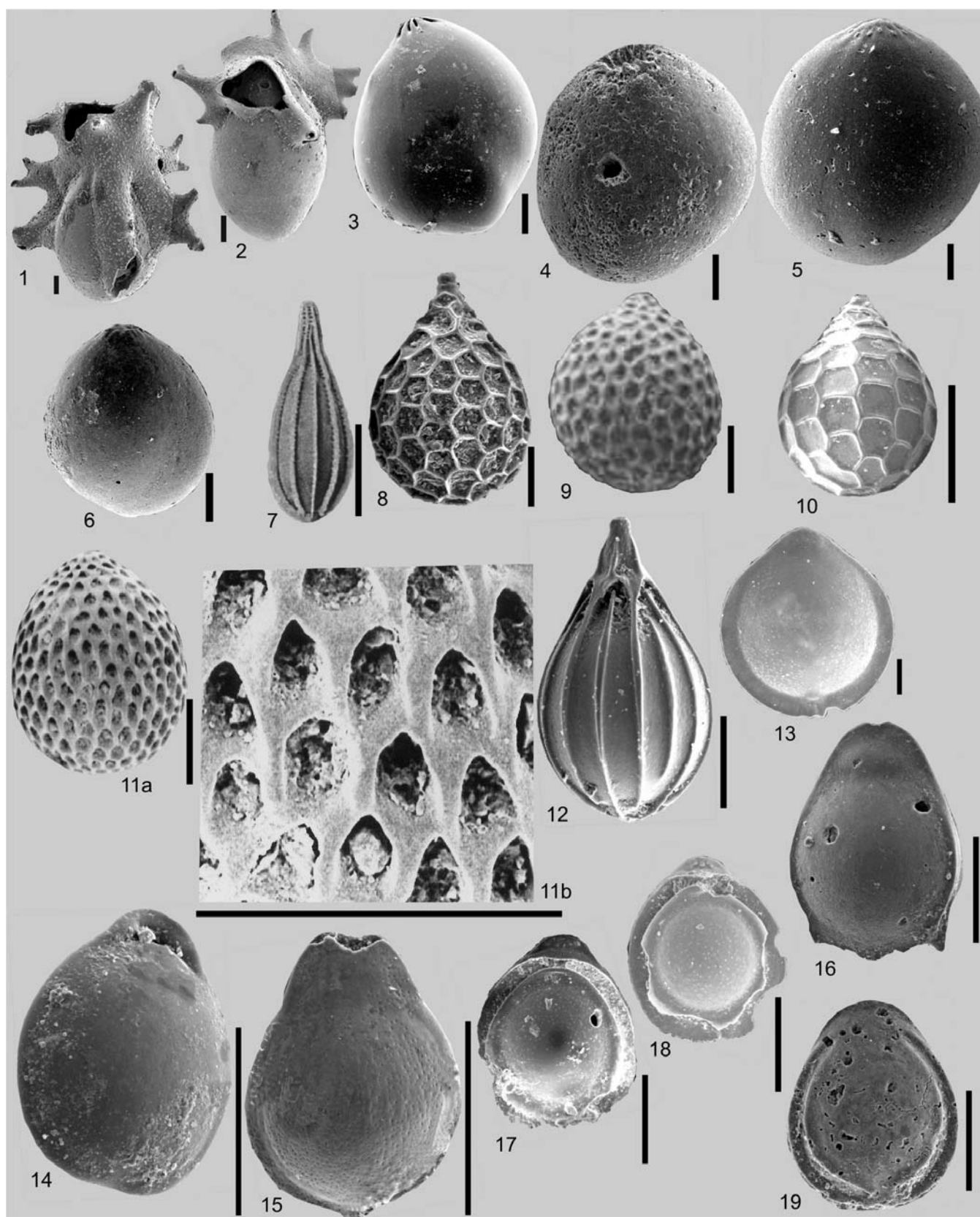


PLATE 49

- 1 *Fissurina sidebottomi* (Buchner). Side view, Erdek Bay, Marmara Sea, Station 165/57.00m.
- 2 *Fissurina* sp. A. Side view, Dardanelles, Station 7/68.00m.
- 3 *Parafissurina lateralis* (Cushman). Side view, Gökçeada-Bozcaada-Çanakkale Triangle, Aegean Sea, Station 5/72.00m.
- 4 *Parafissurina lateralis* (Cushman). Side view, Gökçeada-Bozcaada-Çanakkale Triangle, Aegean Sea, Station 5/72.00m.
- 5 *Parafissurina stapylleria* (Schwager). Side view, Erdek Bay, Marmara Sea, Station 162/45.00m.
- 6 *Parafissurina stapylleria* (Schwager). Side view, Dardanelles, Station 1/10.00m.
- 7 *Parafissurina stapylleria* (Schwager). Side view, Dardanelles, Station 7/68.00m.
- 8a *Entosigmomorphina* sp. Side view, Kaş, Antalya, Mediterranean, Station 131/19.00m.
- 8b *Entosigmomorphina* sp. Detail view of the aperture, Kaş, Antalya, Mediterranean, Station 131/19.00m.
- 9 *Glandulina laevigata* d'Orbigny. Side view, Gulf of Saros, Aegean Sea, Station 23/383.00m.
- 10 *Hoeglundina elegans* (d'Orbigny). Side view, umbilical side, Gulf of Saros, Aegean Sea, Station 12/214.70m.
- 11 *Hoeglundina elegans* (d'Orbigny). Side view, spiral side, Gulf of Saros, Aegean Sea, Station 12/214.70m.
- 12 *Hoeglundina elegans* (d'Orbigny). Side view, spiral side, Gulf of Saros, Aegean Sea, Station 12/214.70m.
- 13 *Brizalina alata* (Seguenza). Side view, Gulf of Gemlik, Marmara Sea, Station 64/71.00m.
- 14 *Brizalina alata* (Seguenza). Side view, Gulf of Gemlik, Marmara Sea, Station 64/71.00m.
- 15 *Brizalina alata* (Seguenza). Side view, Gökçeada-Bozcaada-Çanakkale Triangle, Aegean Sea, Station 10/57.00m.
- 16 *Brizalina alata* (Seguenza). Side view, Dardanelles, Station 7/68.00m.
- 17 *Brizalina alata* (Seguenza). Side view, Dardanelles, Station 7/68.00m.
- 18 *Brizalina earlandi* (Parr). Side view, north of Marmara Sea, Station 89/37.00m.
- 19 *Brizalina earlandi* (Parr). Side view, north of Marmara Sea, Station 89/37.00m.
- 20 *Brizalina earlandi* (Parr). Side view, north of Marmara Sea, Station 89/37.00m.

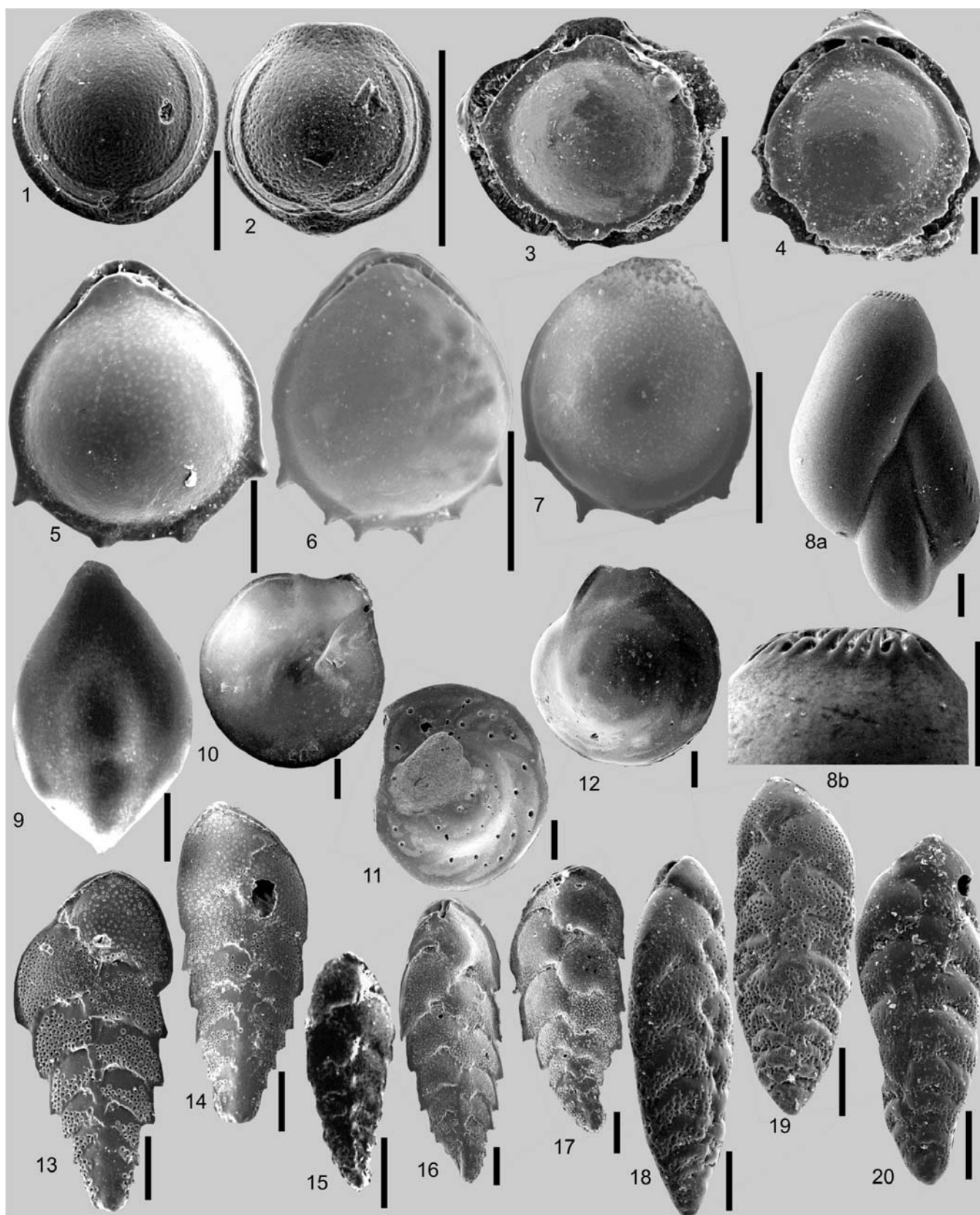


PLATE 50

- 1 *Brizalina simpsoni* (Heron-Allen & Earland). Side view, Gulf of Kuşadası, Aegean Sea, Station 16/10.10m.
- 2 *Brizalina spathulata* (Williamson). Side view, Erdek Bay, Marmara Sea, Station 157/44.00m.
- 3 *Brizalina spathulata* (Williamson). Side view, Gulf of Gemlik, Marmara Sea, Station 39/58.00m.
- 4 *Brizalina spathulata* (Williamson). Side view, Gulf of Gemlik, Marmara Sea, Station 39/58.00m.
- 5 *Brizalina spathulata* (Williamson). Side view, Dardanelles, Station 2/35.00m.
- 6 *Brizalina striatula* (Cushman). Side view, Gulf of Antalya, Mediterranean, Station 5/160.00m.
- 7 *Cassidulina carinata* Silvestri. Side view, Erdek Bay, Marmara Sea, Station 154/46.00m.
- 8 *Cassidulina carinata* Silvestri. Side view, Gulf of Antalya, Mediterranean, Station 5/160.00m.
- 9 *Cassidulina carinata* Silvestri. Side view, Gulf of Antalya, Mediterranean, Station 5/160.00m.
- 10 *Cassidulina carinata* Silvestri. Side view, Dardanelles, Station 1/10.00m.
- 11 *Globocassidulina subglobosa* (Brady). Side view, Erdek Bay, Marmara Sea, Station 162/45.00m.
- 12 *Globocassidulina subglobosa* (Brady). Side view, Dardanelles, Station 4/47.00m.
- 13 *Globocassidulina subglobosa* (Brady). Side view, Gulf of Antalya, Mediterranean, Station 5/160.00m.
- 14 *Globocassidulina subglobosa* (Brady). Side view, Gulf of Antalya, Mediterranean, Station 5/160.00m.
- 15 *Rectuvigerina phlegeri* le Calvez. Side view, Erdek Bay, Marmara Sea, Station 157/130.00m.
- 16 *Rectuvigerina phlegeri* le Calvez. Side view, Gökçeada-Bozcaada-Çanakkale Triangle, Aegean Sea, Station 10/57.00m.
- 17 *Rectuvigerina phlegeri* le Calvez. Side view, Dardanelles, Station 1/10.00m.
- 18 *Rectuvigerina phlegeri* le Calvez. Side view, Dardanelles, Station 1/10.00m.
- 19a *Rectobolivina columellaris* (Brady). Side view, Gulf of Saros, Aegean Sea, Station 74/200.00m
- 19b *Rectobolivina columellaris* (Brady). Detail view of the aperture, Gulf of Saros, Aegean Sea, Station 74/200.00m.
- 20a *Bulimina aculeata* d'Orbigny. Side view, Golden Horn, İstanbul, Borehole A7/53.35–53.75m.
- 20b *Bulimina aculeata* d'Orbigny. Side view of the first chambers, Golden Horn, İstanbul, Borehole A7/53.35–53.75m.
- 21a *Bulimina aculeata* d'Orbigny. Side view, Gökçeada-Bozcaada-Çanakkale Triangle, Aegean Sea, Station 4/58.00m.
- 21b *Bulimina aculeata* d'Orbigny. Side view, Gökçeada-Bozcaada-Çanakkale Triangle, Aegean Sea, Station 4/58.00m.

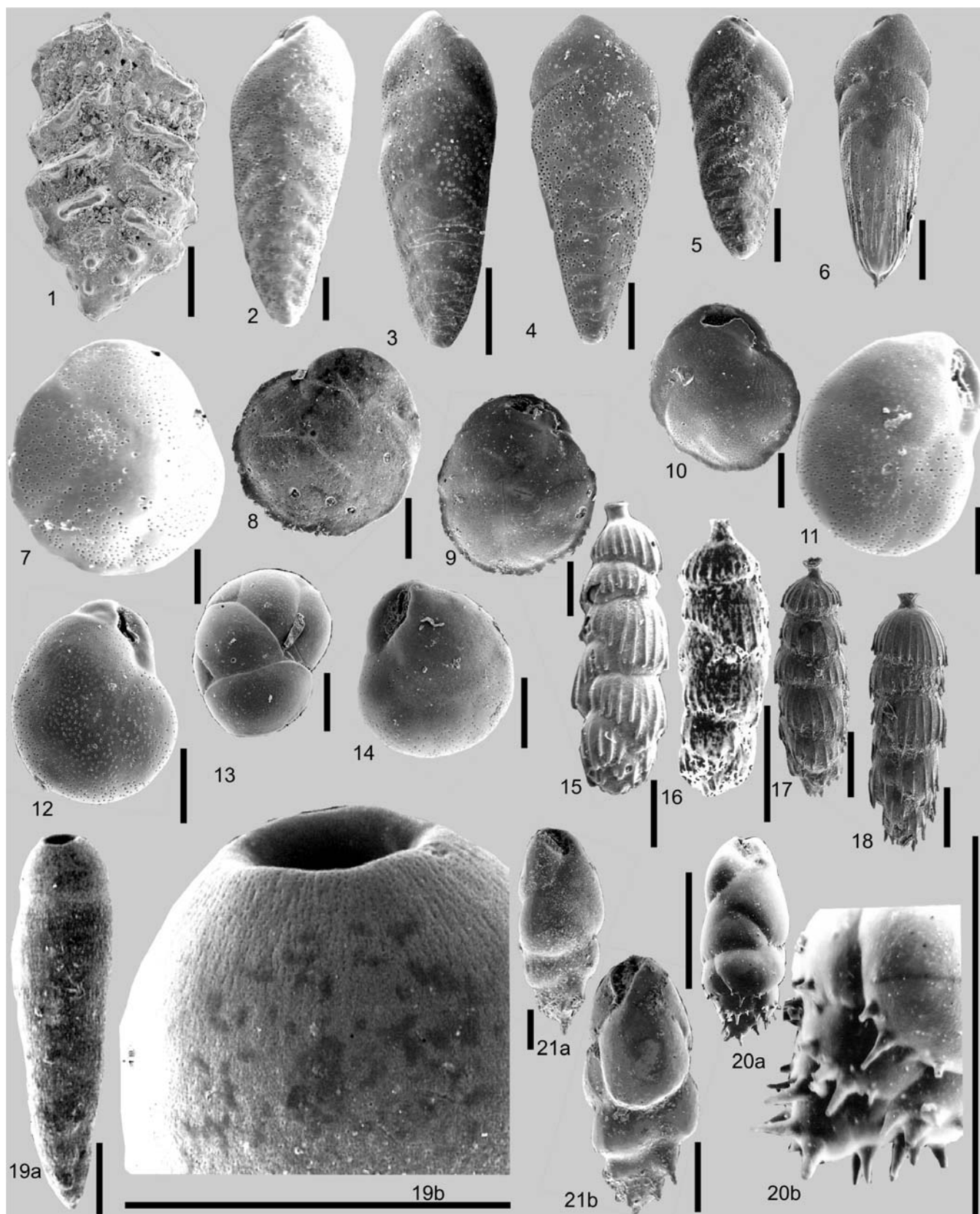


PLATE 51

- 1 *Bulimina costata* d'Orbigny. Side view, Gulf of Saros, Aegean Sea, Station 23/383.00m.
- 2 *Bulimina costata* d'Orbigny. Side view, Gulf of Saros, Aegean Sea, Station 23/383.00m.
- 3 *Bulimina costata* d'Orbigny. Side view, Gulf of Antalya, Mediterranean, Station 12/205.00m.
- 4 *Bulimina costata* d'Orbigny. Side view, Gulf of Antalya, Mediterranean, Station 12/205.00m.
- 5 *Bulimina costata* d'Orbigny. Side view, Dardanelles, Station 7/68.00m.
- 6 *Bulimina elongata* d'Orbigny. Side view, Gulf of Saros, Aegean Sea, Station 13/156.00m.
- 7 *Bulimina elongata* d'Orbigny. Side view, Gulf of Saros, Aegean Sea, Station 13/156.00m.
- 8 *Bulimina elongata* d'Orbigny. Side view, Gulf of Gemlik, Marmara Sea, Station 39/58.00m.
- 9 *Bulimina elongata* d'Orbigny. Side view, Dardanelles, Station 1/10.00m.
- 10 *Bulimina elongata* d'Orbigny. Side view, Dardanelles, Station 1/10.00m.
- 11 *Bulimina marginata* d'Orbigny. Side view, Gulf of Saros, Aegean Sea, Station 13/156.00m.
- 12 *Bulimina marginata* d'Orbigny. Side view, Dardanelles, Station 1/10.00m.
- 13 *Bulimina marginata* d'Orbigny. Side view, Dardanelles, Station 7/68.00m.
- 14 *Globobulimina affinis* (d'Orbigny). Side view, Gulf of Saros, Aegean Sea, Station 8/55.70m.
- 15 *Globobulimina affinis* (d'Orbigny). Side view, Gulf of Saros, Aegean Sea, Station 8/55.70m.
- 16 *Globobulimina affinis* (d'Orbigny). Side view, Gulf of Saros, Aegean Sea, Station 8/55.70m.
- 17 *Globobulimina affinis* (d'Orbigny). Side view, Dardanelles, Station 3/41.00m.
- 18 *Globobulimina affinis* (d'Orbigny). Side view, Dardanelles, Station 3/41.00m.
- 19 *Globobulimina affinis* (d'Orbigny). Side view, Erdek Bay, Marmara Sea, Station 150/35.00m.
- 20 *Globobulimina pseudospinescens* (Emiliani). Side view, Gulf of Saros, Aegean Sea, Station 23/383.00m.
- 21 *Globobulimina pseudospinescens* (Emiliani). Side view, Gulf of Saros, Aegean Sea, Station 23/383.00m.
- 22 *Globobulimina pseudospinescens* (Emiliani). Side view, Dardanelles, Station 4/47.00m.

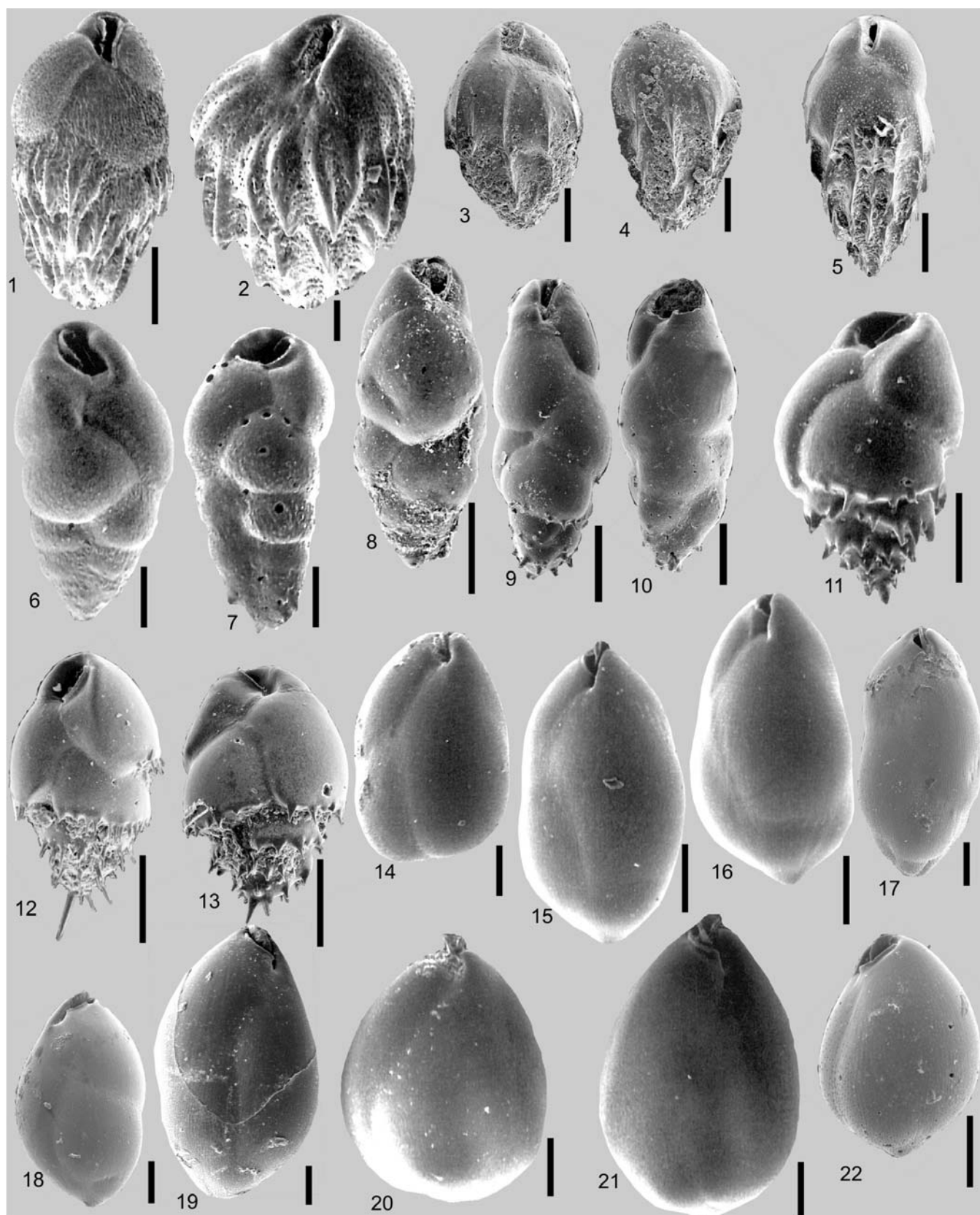


PLATE 52

- 1 *Protoglobobulimina pupoides* (d'Orbigny). Side view, Gulf of İzmit. Marmara Sea, Borehole S8/54.45–55.00m.
- 2 *Euuvigerina reineri* Belford. Side view, drill hole, Hatay, Asi-06/10.60–10.80m.
- 3 *Euuvigerina reineri* Belford. Side view, drill hole, Hatay, Asi,-02/9.50–9.70m.
- 4 *Euuvigerina reineri* Belford. Side view, Latest-Pleistocene, Hatay, Mağara Köy, 70.000 BP.
- 5 *Euuvigerina* sp. Side view, Gulf of Saros, Aegean Sea, Station 12/214.70m.
- 6 *Uvigerina mediterranea* Hofker. Side view, Gulf of Saros, Aegean Sea, Station 7/90.00m.
- 7 *Uvigerina mediterranea* Hofker. Side view, Gulf of Saros, Aegean Sea, Station 7/90.00m.
- 8 *Uvigerina mediterranea* Hofker. Side view, Gulf of Antalya, Mediterranean, Station 20/418.00m.
- 9 *Uvigerina peregrina* Cushman. Side view, Gulf of Kuşadası, Aegean Sea, Station 4/226.00m.
- 10 *Angulogerina angulosa* (Williamson). Side view, Gökçeada-Bozcaada-Çanakkale Triangle, Aegean Sea, Station 9/72.00m.
- 11 *Angulogerina angulosa* (Williamson). Side view, Dardanelles, Station 7/68.00m.
- 12 *Reussella spinulosa* (Reuss). Side view, Gökçeada, Aegean Sea, Station 29/11.00m.
- 13 *Reussella spinulosa* (Reuss). Side view, Gökçeada, Aegean Sea, Station 29/11.00m.
- 14 *Reussella spinulosa* (Reuss). Side view, Gulf of Antalya, Mediterranean, Station 5/160.00m.
- 15 *Reussella spinulosa* (Reuss). Side view, Dardanelles, Station 1/10.00m.
- 16 *Reussella spinulosa* (Reuss). Side view, Kekova, Antalya, Mediterranean, Station 90/6.00m.
- 17 *Reussella spinulosa* (Reuss). Side view, Gulf of Kuşadası, Aegean Sea, Station 28/17.90m.
- 18 *Reussella spinulosa* (Reuss). Side view, Gulf of Gemlik, Marmara Sea, Station 38/40.00m.
- 19 *Fursenkoina acuta* (d'Orbigny). Side view, Erdek Bay, Marmara Sea, Station 157/44.00m.
- 20 *Fursenkoina acuta* (d'Orbigny). Side view, Gökçeada-Bozcaada-Çanakkale Triangle, Aegean Sea, Station 10/57.00m.
- 21 *Fursenkoina acuta* (d'Orbigny). Side view, Dardanelles, Station 1/10.00m.
- 22 *Fursenkoina acuta* (d'Orbigny). Side view, Dardanelles, Station E1/44.00m.
- 23 *Fursenkoina acuta* (d'Orbigny). Side view, Gökçeada-Bozcaada-Çanakkale Triangle, Aegean Sea, Station 6/57.00m.

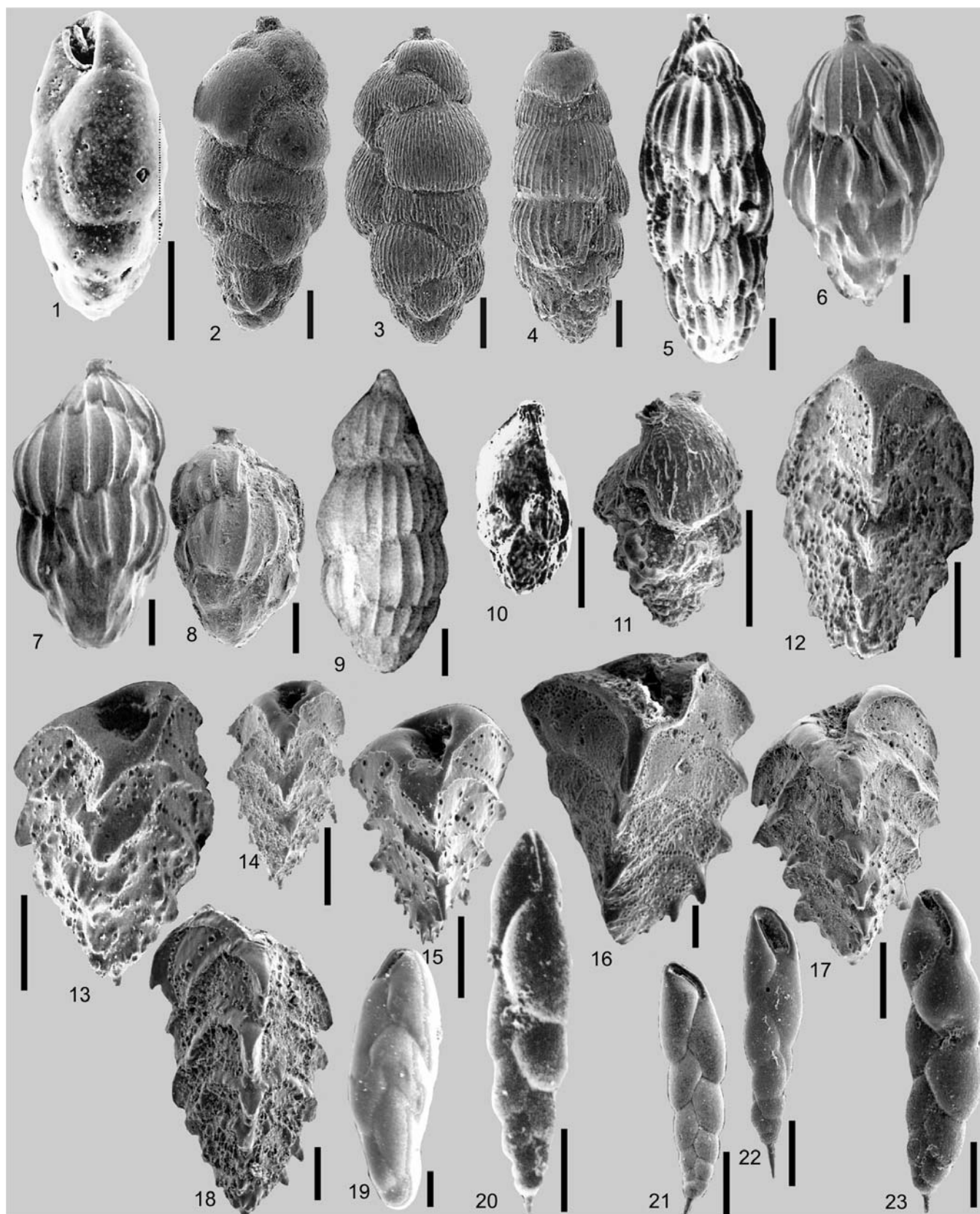


PLATE 53

- 1 *Canceris sagra* (d'Orbigny). Side view, Gulf of Edremit, Aegean Sea, Station 1/334.50m.
- 2a *Valvulineria bradyana* (Fornasini). Side view, spiral side, Gulf of Saros, Aegean Sea, Station 1/27.00m.
- 2b *Valvulineria bradyana* (Fornasini). Side view, umbilical side, Gulf of Saros, Aegean Sea, Station 1/27.00m.
- 3a *Valvulineria bradyana* (Fornasini). Side view, spiral side, Gulf of Antalya, Mediterranean, Station 10/18.00m.
- 3b *Valvulineria bradyana* (Fornasini). Side view, umbilical side, Gulf of Antalya, Mediterranean, Station 10/18.00m.
- 4a *Valvulineria bradyana* (Fornasini). Side view, spiral side, Çandarlı Bay, Aegean Sea, Station 10/22.50m.
- 4b *Valvulineria bradyana* (Fornasini). Side view, umbilical side, Çandarlı Bay, Aegean Sea, Station 10/22.50m.
- 5a *Valvulineria bradyana* (Fornasini). Side view, spiral side, Dardanelles, Station 4/47.00m.
- 5b *Valvulineria bradyana* (Fornasini). Side view, umbilical side, Dardanelles, Station 4/47.00m.
- 6 *Eponides concameratus* (Williamson). Side view, umbilical side, Gulf of Gemlik, Marmara Sea, Station 47/30.00m.
- 7a *Eponides concameratus* (Williamson). Side view, spiral side, Gulf of Antalya, Mediterranean, Station 21/60.00m.
- 7b *Eponides concameratus* (Williamson). Side view, umbilical side, Gulf of Antalya, Mediterranean, Station 21/60.00m.
- 8a *Eponides concameratus* (Williamson). Side view, spiral side, Dardanelles, Station 7A/40.00m.
- 8b *Eponides concameratus* (Williamson). Side view, umbilical side, Dardanelles, Station 7A/40.00m.
- 9 *Eponides concameratus* (Williamson). Side view, spiral side, Üçadalar, Antalya, Mediterranean, Station 127/18.00m.
- 10 *Eponides concameratus* (Williamson). Side view, spiral side, Üçadalar, Antalya, Mediterranean, Station 128/17.00m.
- 11a *Eponides concameratus* (Williamson). Side view, spiral side, Kaş, Antalya, Mediterranean, Station 44/22.00m.
- 11b *Eponides concameratus* (Williamson). Side view, umbilical side, Üçadalar, Antalya, Mediterranean, Station 127/18.00m.
- 11c *Eponides concameratus* (Williamson). Side view, edge and apertural view, Üçadalar, Antalya, Mediterranean, Station 119/12.00m.

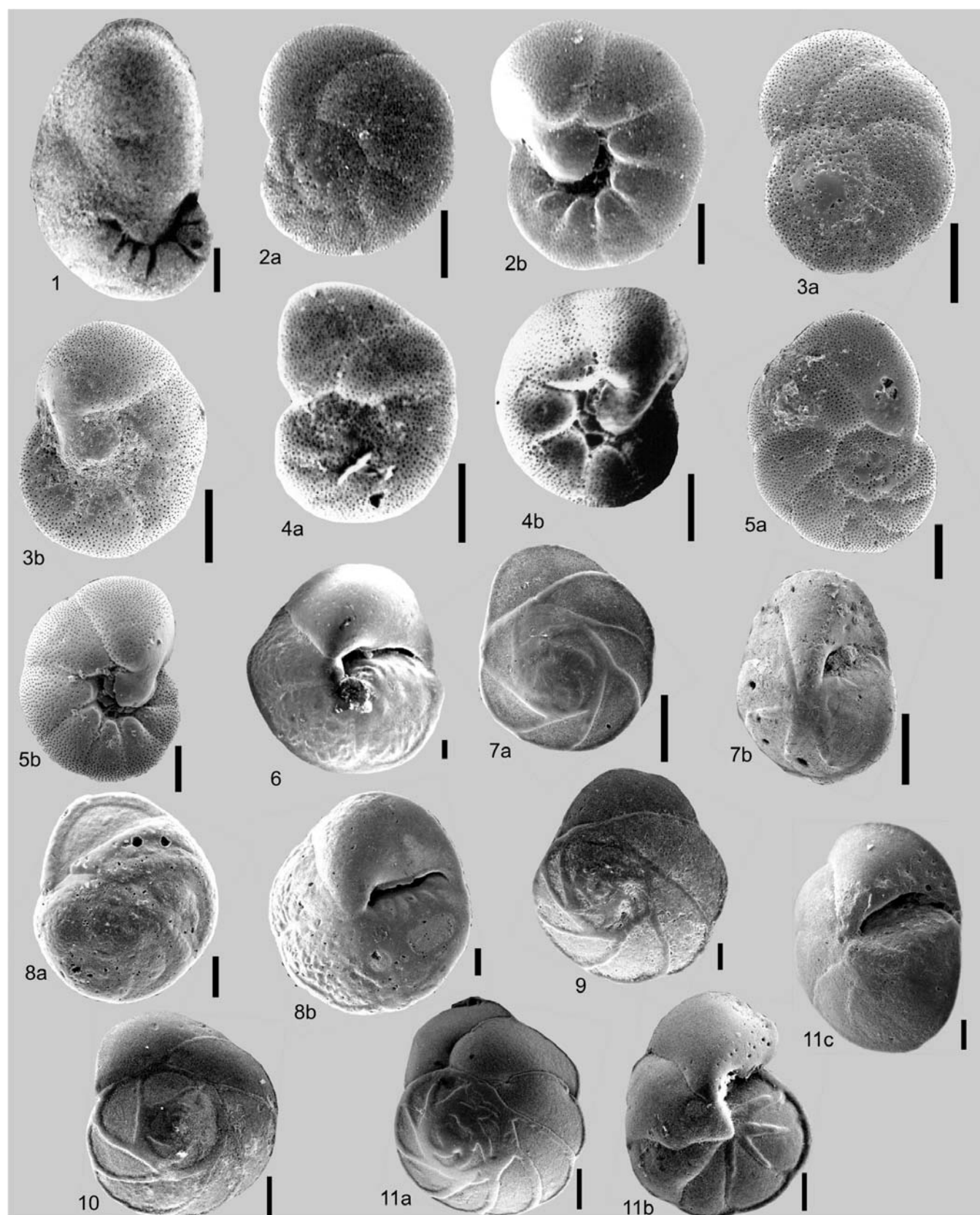


PLATE 54

- 1a *Planopulvinulina depressa* (Brady). Side view, spiral side, Gulf of Saros, Aegean Sea, Station 51/12.30m.
- 1b *Planopulvinulina depressa* (Brady). Side view, enlargement of central part, Gulf of Saros, Aegean Sea, Station 51/12.30m.
- 2 *Vonkleinsmidia* sp. Side view, spiral side, northern part of Bosphorus, Borehole BPMB14/20.00–21.00m.
- 3 *Vonkleinsmidia* sp. Side view, spiral side, northern part of Bosphorus, Borehole, BPMB14/20.00–21.00m.
- 4 *Stomatorbina concentrica* (Parker & Jones). Side view, spiral side, Gulf of Saros, Aegean Sea, station 79/29.00m.
- 5 *Stomatorbina concentrica* (Parker & Jones). Side view, spiral side, Gökçeada, Aegean Sea, Station 17/4.00m.
- 6 *Stomatorbina* sp. Side view, spiral side, Marmaris Bay, Aegean Sea, Station 1/106.40m.
- 7 *Stomatorbina* sp. Side view, spiral side, Marmaris Bay, Aegean Sea, Station 1/106.40m.
- 8 *Stomatorbina* sp. Side view, umbilical side, Marmaris Bay, Aegean Sea, Station 1/106.40m.
- 9a *Neoeponides bradyi* (le Calvez). Side view, spiral side, Gökçeada, Aegean Sea, Station 32/16.00m.
- 9b *Neoeponides bradyi* (le Calvez). Side view, umbilical side, Gökçeada, Aegean Sea, Station 32/16.00m.
- 10a *Neoeponides bradyi* (le Calvez). Side view, spiral side, Gulf of Kuşadası, Aegean Sea, Station 35/14.40m.
- 10b *Neoeponides bradyi* (le Calvez). Side view, umbilical side, Gulf of Kuşadası, Aegean Sea, Station 35/14.40m.
- 11a *Neoeponides bradyi* (le Calvez). Side view, spiral side, Gökçeada-Bozcaada-Çanakkale Triangle, Aegean Sea, Station 34/39.00m.
- 11b *Neoeponides bradyi* (le Calvez). Side view, umbilical side, Gökçeada-Bozcaada-Çanakkale Triangle, Aegean Sea, Station 34/39.00m.
- 12 *Neoeponides bradyi* (le Calvez). Side view, umbilical side, Dardanelles, Station 5/25.00m.

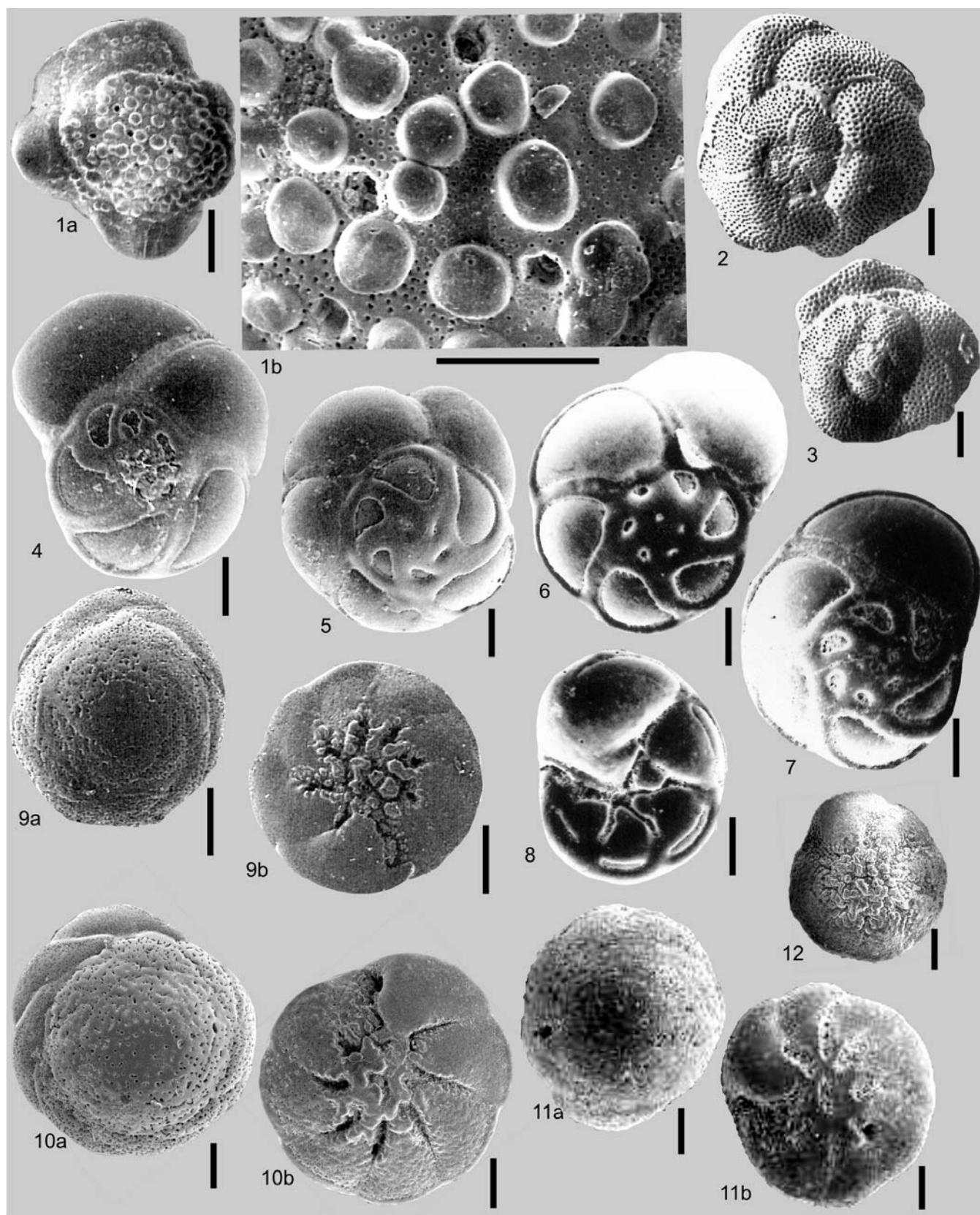


PLATE 55

- 1a *Gavelinopsis praegeri* (Heron-Allen & Earland). Side view, spiral side, Gökçeada-Bozcaada-Çanakkale Triangle, Aegean Sea, Station 132/81.00m.
- 1b *Gavelinopsis praegeri* (Heron-Allen & Earland). Side view, umbilical side, Gökçeada-Bozcaada-Çanakkale Triangle, Aegean Sea, Station 132/81.00m.
- 2a *Neoconorbina terquemi* (Rzehak). Side view, spiral side, Gökçeada, Aegean Sea, Station 32/16.00m.
- 2b *Neoconorbina terquemi* (Rzehak). Side view, umbilical side, Gökçeada, Aegean Sea, Station 32/16.00m.
- 3 *Neoconorbina terquemi* (Rzehak). Side view, spiral side, Erdek Bay, Marmara Sea, Station 147/28.00m.
- 4 *Neoconorbina terquemi* (Rzehak). Side view, spiral side, Gulf of Gemlik, Marmara Sea, Station 47/30.00m.
- 5 *Neoconorbina terquemi* (Rzehak). Side view, spiral side, Kekova, Antalya, Mediterranean, Station 81/12.00m.
- 6a *Rosalina bradyi* Cushman. Side view, spiral side, Gulf of Saros, Aegean Sea, Station 17/33.90m.
- 6b *Rosalina bradyi* Cushman. Side view, umbilical side, Gulf of Saros, Aegean Sea, Station 17/33.90m.
- 7a *Rosalina bradyi* Cushman. Side view, spiral side, Gökçeada, Aegean Sea, Station 32/16.00m.
- 7b *Rosalina bradyi* Cushman. Side view, umbilical side, Gökçeada, Aegean Sea, Station 32/16.00m.
- 8 *Rosalina bradyi* Cushman. Side view, umbilical side, Erdek Bay, Marmara Sea, Station 147/28.00m.
- 9 *Rosalina bradyi* Cushman. Side view, umbilical side, Gulf of Gemlik, Marmara Sea, Station 47/30.00m.
- 10 *Rosalina bradyi* Cushman. Side view, spiral side, Gulf of Saros, Harmantaşı, Aegean Sea, Line 1/35.00m.
- 11a *Rosalina bradyi* Cushman. Side view, spiral side, Kekova, Antalya, Mediterranean, Station 94/24.00m.
- 11b *Rosalina bradyi* Cushman. Side view, umbilical side, Kekova, Antalya, Mediterranean, Station 94/24.00m.
- 12a *Rosalina bradyi* Cushman. Side view, spiral side, Gulf of Antalya, Mediterranean, Station 16/20.00m.
- 12b *Rosalina bradyi* Cushman. Side view, umbilical side, Gulf of Antalya, Mediterranean, Station 16/20.00m.
- 13a *Rosalina bradyi* Cushman. Side view, spiral side, Dardanelles, Station 7A/44.00m.
- 13b *Rosalina bradyi* Cushman. Side view, umbilical side, Dardanelles, Station 7A/44.00m.

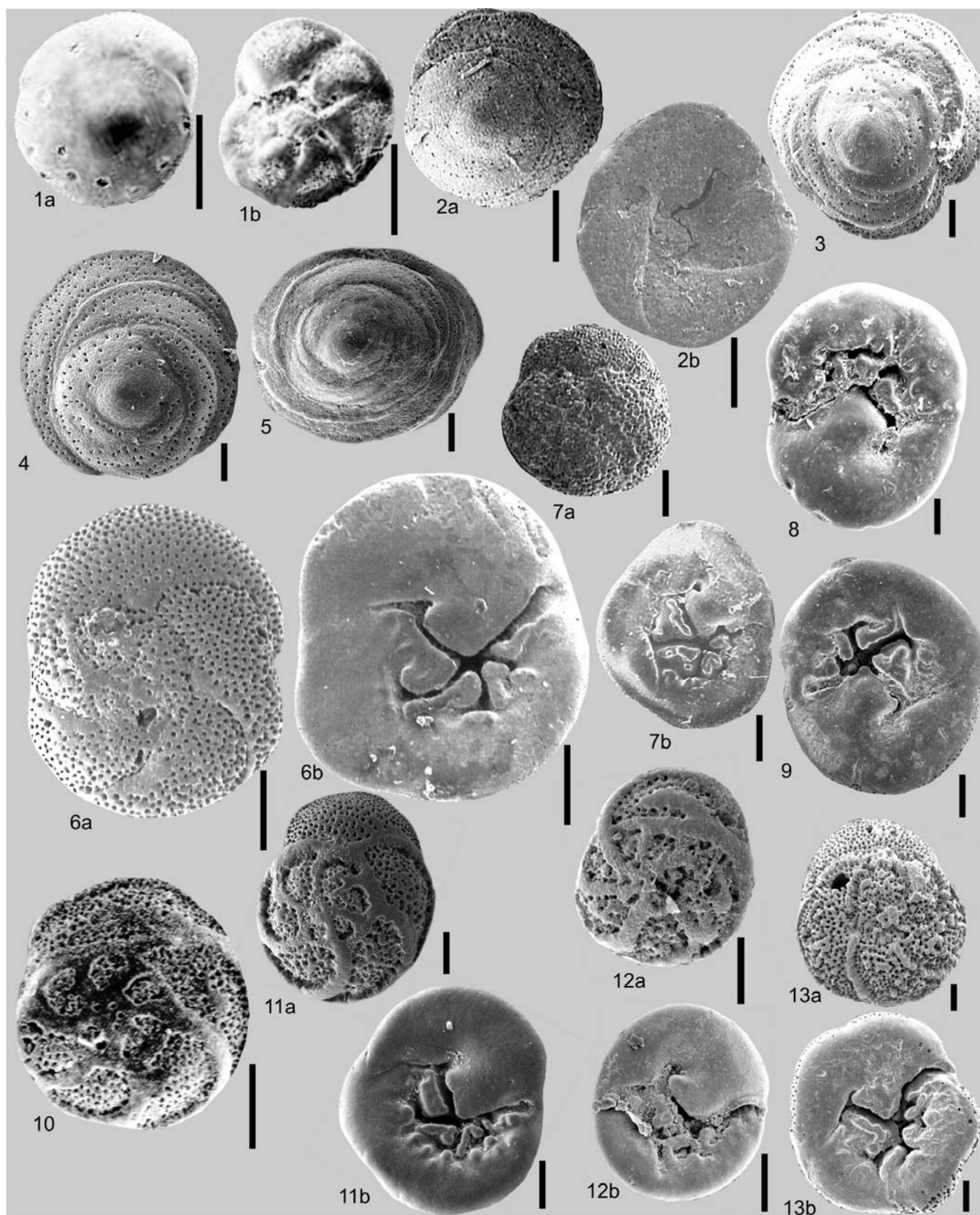


PLATE 56

- 1a *Rosalina floridensis* (Cushman). Side view, spiral side, Gökçeada, Aegean Sea Station 32/16.00m.
- 1b *Rosalina floridensis* (Cushman). Side view, umbilical side, Gökçeada, Aegean Sea, Station 32/16.00m.
- 2a *Rosalina floridensis* (Cushman). Side view, spiral side, Gulf of Gemlik, Marmara Sea, Station 47/30.00m.
- 2b *Rosalina floridensis* (Cushman). Side view, umbilical side, Gulf of Gemlik, Marmara Sea, Station 47/30.00m.
- 3 *Rosalina floridensis* (Cushman). Side view, spiral side, Dardanelles, Station 5/25.00m.
- 4a *Rosalina floridensis* (Cushman). Side view, spiral side, north of Bosphorus, station 11/80.00m.
- 4b *Rosalina floridensis* (Cushman). Side view, umbilical side, north of Bosphorus, station 11/80.00m.
- 5 *Rosalina floridensis* (Cushman). Side view, Üçadalar, Antalya, Mediterranean, Station 127/21.00m.
- 6 *Rosalina globularis* d'Orbigny. Side view, spiral side, Gökçeada, Aegean Sea, Station 30/3.00m.
- 7a *Rosalina globularis* d'Orbigny. Side view, spiral side, north of Bosphorus, Station 10/63.00m.
- 7b *Rosalina globularis* d'Orbigny. Side view, umbilical side, north of Bosphorus, Station 10/63.08m.
- 8a *Rosalina globularis* d'Orbigny. Side view, spiral side, Dardanelles, Station E2/48.00m.
- 8b *Rosalina globularis* d'Orbigny. Side view, umbilical side, Dardanelles, Station E2/48.00m.
- 9 *Rosalina globularis* d'Orbigny. Side view, spiral side, Gulf of Saros, Harmantaşı, Aegean Sea, Line 1/20.00m.
- 10 *Rosalina macropora* (Hofker). Side view, spiral side, Gökçeada-Bozcaada-Çanakkale Triangle, Aegean Sea, Station 99/46.30m.
- 11 *Rosalina macropora* (Hofker). Side view, spiral side, Gökçeada-Bozcaada-Çanakkale Triangle, Aegean Sea, Station 99/46.30m.
- 12 *Rosalina macropora* (Hofker). Side view, umbilical side, Bozcaada, Aegean Sea, Station 9/1.50m.
- 13 *Rosalina macropora* (Hofker). Side view, northern part of Bosphorus, Borehole BPMB13/5.00–6.00m.
- 14 *Rosalina macropora* (Hofker). Side view, northern part of Bosphorus, Borehole BPMB14/5.00–6.00m.

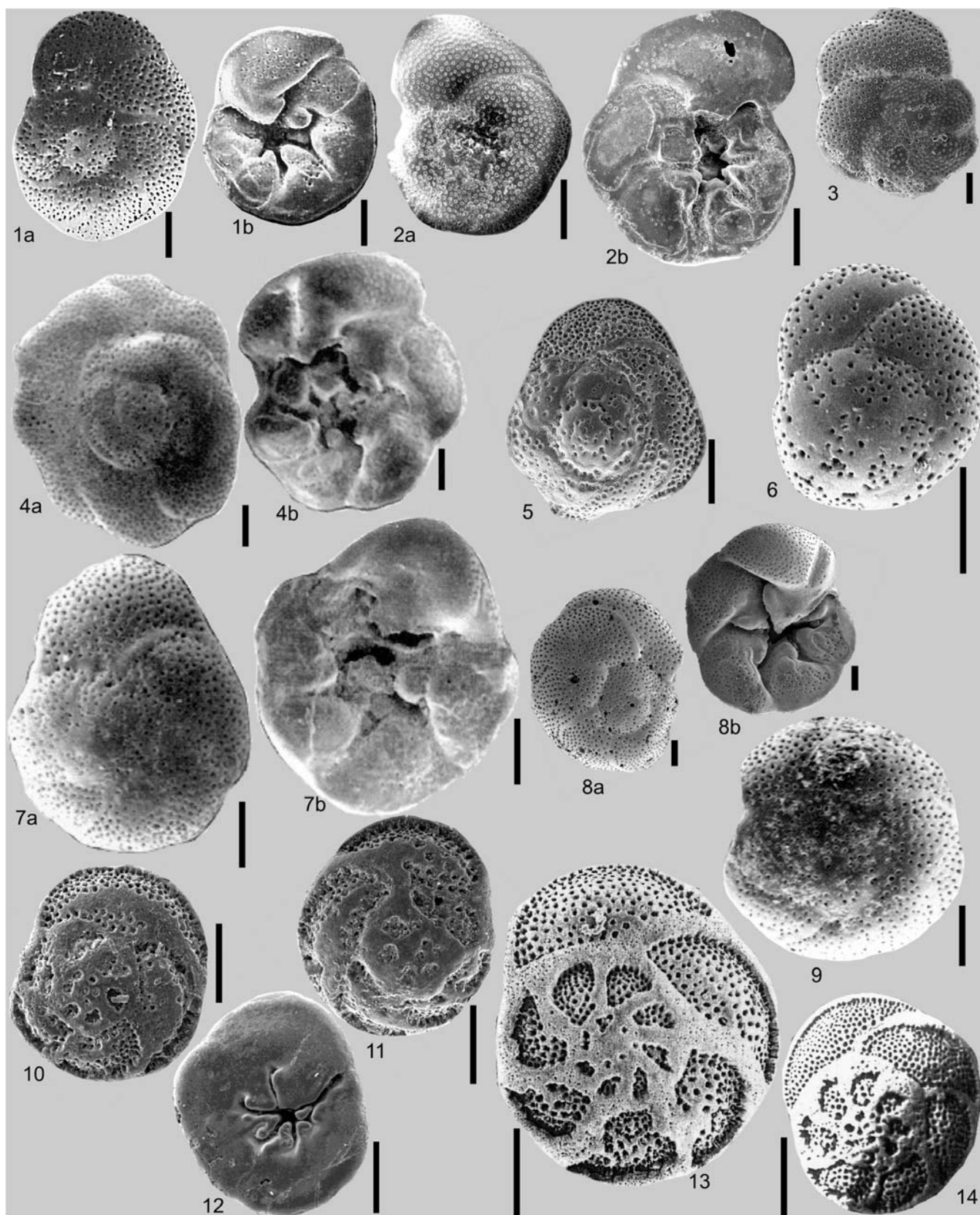


PLATE 57

- 1a *Rosalina obtusa* d'Orbigny. Side view, spiral side, Gulf of Datça, Aegean Sea, Station 5/59.30m.
- 1b *Rosalina obtusa* d'Orbigny. Side view, umbilical side, Gulf of Datça, Aegean Sea, Station 5/59.30m.
- 2 *Rosalina obtusa* d'Orbigny. Side view, umbilical view, Dikili Bay, Aegean Sea, Station 8/35.80m.
- 3a *Pararosalina dimorphiformis* McCulloch. Side view, spiral side, Bozcaada, Aegean Sea, Station 2/0.50m.
- 3b *Pararosalina dimorphiformis* McCulloch. Side view, umbilical side, Bozcaada, Aegean Sea, Station 2/0.50m.
- 4 *Pararosalina dimorphiformis* McCulloch. Side view, umbilical side, Gulf of Datça, Aegean Sea, Station 2/45.00m.
- 5a *Trethomphalus bulloides* (d'Orbigny). Side view, spiral side, Gökçeada, Aegean Sea, Station 21/15.00m.
- 5b *Trethomphalus bulloides* (d'Orbigny). Side view, edge view, Gökçeada, Aegean Sea, Station 21/15.00m.
- 6 *Trethomphalus bulloides* (d'Orbigny). Side view, edge view, Gökçeada, Aegean Sea, Station 21/15.00m.
- 7 *Conorbella erecta* (Sidebottom). Side view, spiral side, Gökçeada-Bozcaada-Çanakkale Triangle, Aegean Sea, Station 121/38.00m.
- 8 *Conorbella erecta* (Sidebottom). Side view, spiral side, Gökçeada-Bozcaada-Çanakkale Triangle, Aegean Sea, Station 121/38.00m.
- 9 *Conorbella erecta* (Sidebottom). Side view, umbilical side, Gökçeada-Bozcaada-Çanakkale Triangle, Aegean Sea, Station 121/38.00m.
- 10 *Conorbella imperatoria* (d'Orbigny). Side view, spiral side, Gökçeada-Bozcaada-Çanakkale Triangle, Aegean Sea, Station 120/39.00m.
- 11 *Conorbella imperatoria* (d'Orbigny). Side view, umbilical side, Gökçeada-Bozcaada-Çanakkale Triangle, Aegean Sea, Station 120/39.00m.
- 12 *Conorbella imperatoria* (d'Orbigny). Side view, spiral side, Gökçeada-Bozcaada-Çanakkale Triangle, Aegean Sea, Station 120/39.00m.
- 13a *Conorbella imperatoria* (d'Orbigny). Side view, spiral side, Gökçeada-Bozcaada-Çanakkale Triangle, Aegean Sea, Station 34/39.00m.
- 13b *Conorbella imperatoria* (d'Orbigny). Side view, umbilical side, Gökçeada-Bozcaada-Çanakkale Triangle, Aegean Sea, Station 34/39.00m.
- 14a *Conorbella imperatoria* (d'Orbigny). Side view, spiral side, Gökçeada, Aegean Sea, Station 29/11.00m.
- 14b *Conorbella imperatoria* (d'Orbigny). Side view, umbilical side, Gökçeada, Aegean Sea, Station 29/11.00m.

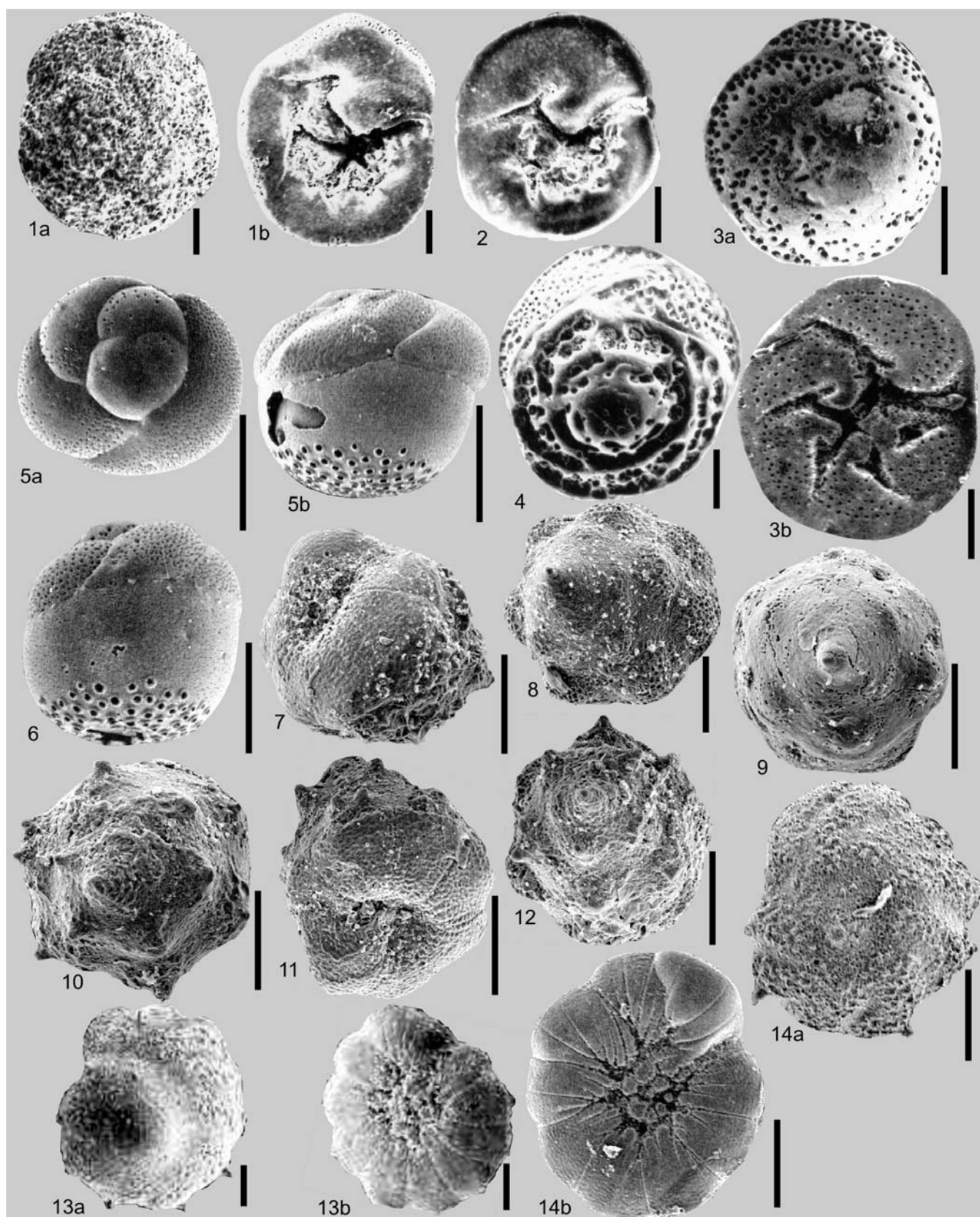


PLATE 58

- 1a *Planoglabratella opercularis* (d'Orbigny). Side view, spiral side, SW of Dilek Peninsula, Aegean Sea, Station 15/72.00m.
- 1b *Planoglabratella opercularis* (d'Orbigny). Side view, umbilical side, SW of Dilek Peninsula, Aegean Sea, Station 15/72.00m.
- 2a *Planoglabratella opercularis* (d'Orbigny). Side view, spiral side, Gökçeada-Bozcaada-Çanakkale Triangle, Aegean Sea, Station 5/72.00m.
- 2b *Planoglabratella opercularis* (d'Orbigny). Side view, umbilical side, Gökçeada-Bozcaada-Çanakkale Triangle, Aegean Sea, Station 5/72.00m.
- 2c *Planoglabratella opercularis* (d'Orbigny). Side view, edge view, Gökçeada-Bozcaada-Çanakkale Triangle, Aegean Sea, Station 5/72.00m.
- 3 *Planoglabratella opercularis* (d'Orbigny). Side view, spiral side, Dikili Bay, Aegean Sea, Station 8/35.80m.
- 4a *Planoglabratella opercularis* (d'Orbigny). Side view, umbilical side, Dikili Bay, Aegean Sea, Station 8/35.80m.
- 4b *Planoglabratella opercularis* (d'Orbigny). Side view, enlargement of the umbilical side, Dikili Bay, Aegean Sea, Station 8/35.80m.
- 5 *Planoglabratella opercularis* (d'Orbigny). Side view, spiral side, Gulf of Antalya, Mediterranean, Station 21/60.00m.
- 6a *Planoglabratella opercularis* (d'Orbigny). Side view, spiral side, Dardanelles, Station 7A/40.00m.
- 6b *Planoglabratella opercularis* (d'Orbigny). Side view, umbilical side, Dardanelles, Station 7A/40.00m.
- 7a *Planoglabratella opercularis* (d'Orbigny). Side view, spiral side, Gulf of Antalya, Mediterranean, Station 34/39.00m.
- 7b *Planoglabratella opercularis* (d'Orbigny). Side view, umbilical side, Gulf of Antalya, Mediterranean, Station 34/39.00m.
- 7c *Planoglabratella opercularis* (d'Orbigny). Side view, edge view, Gulf of Antalya, Mediterranean, Station 34/39.00m.
- 8 *Siphonina reticulata* (Czjzek). Side view, SW of Dilek Peninsula, Aegean Sea, Station 15/72.00m.
- 9 *Siphonina reticulata* (Czjzek). Side view, Dardanelles, Station 7/68.00m.
- 10 *Siphonina reticulata* (Czjzek). Side view, SW of Dilek Peninsula, Aegean Sea, Station 15/72.00m.
- 11a *Cibicidoides pachyderma* (Rzehak). Side view, spiral side, Gulf of Saros, Aegean Sea, Station 13/156.00m.
- 11b *Cibicidoides pachyderma* (Rzehak). Side view, umbilical side, Gulf of Saros, Aegean Sea, Station 13/156.00m.
- 12a *Cibicidoides pachyderma* (Rzehak). Side view, spiral side, Gulf of Antalya, Station 20/418.00m.
- 12b *Cibicidoides pachyderma* (Rzehak). Side view, umbilical side, Gulf of Antalya, Station 20/418.00m.

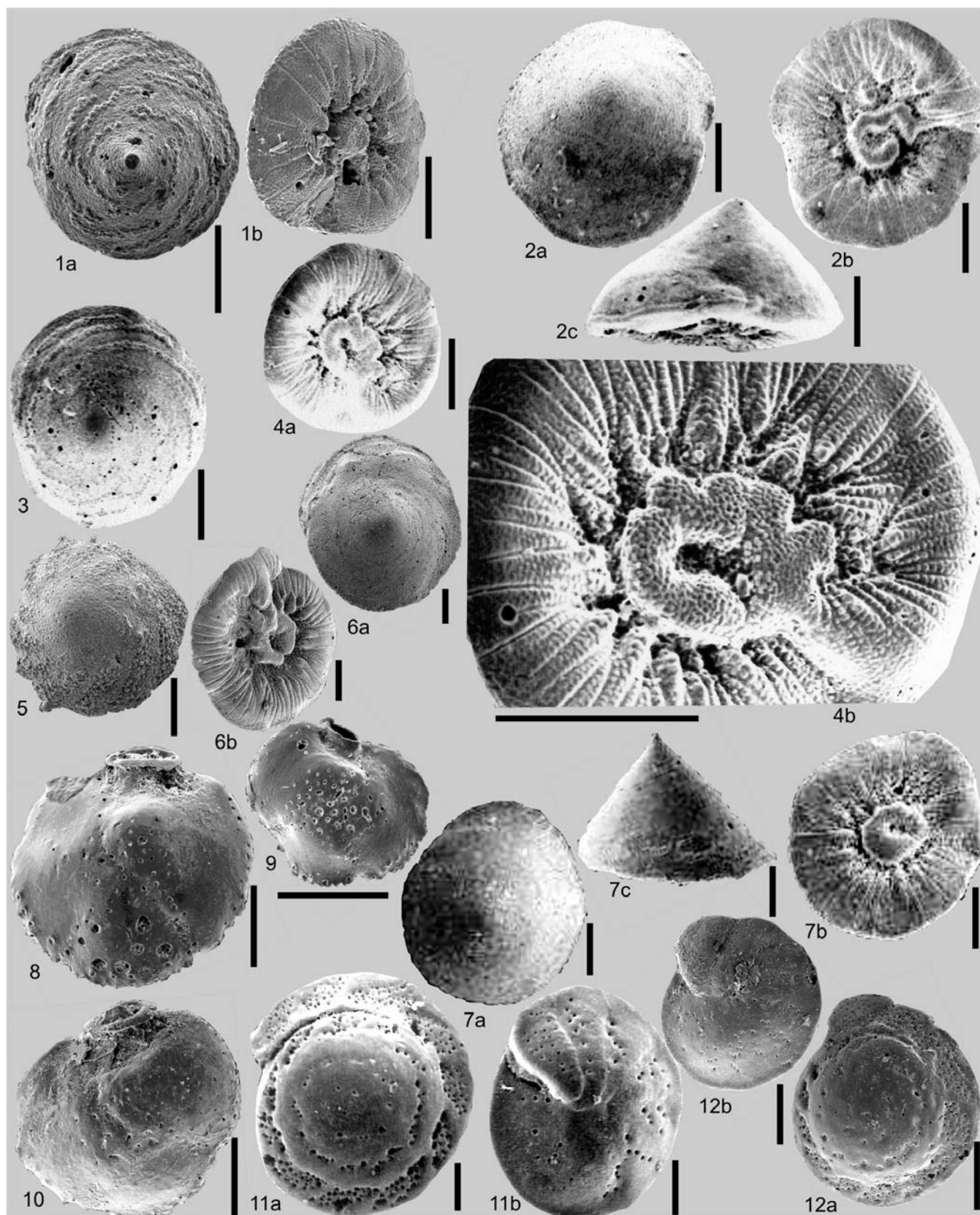


PLATE 59

- 1 *Cibicidoides pseudoungerianus* (Cushman). Side view, umbilical side, Gulf of Saros, Aegean Sea, Station 23/383.00m.
- 2a *Discorbinella bertheloti* (d'Orbigny). Side view, spiral side, Gökçeada, Aegean Sea, Station 32/16.00m.
- 2b *Discorbinella bertheloti* (d'Orbigny). Side view, umbilical side, Gökçeada, Aegean Sea, Station 32/16.00m.
- 3 *Discorbinella bertheloti* (d'Orbigny). Side view, umbilical side, Erdek Bay, Marmara Sea, Station 166/46.00m.
- 4 *Discorbinella bertheloti* (d'Orbigny). Side view, umbilical side, Çandarlı Bay, Aegean Sea, Station 11/52.00m.
- 5a *Discorbinella bertheloti* (d'Orbigny). Side view, spiral side, Gulf of Gemlik, Marmara Sea, Station 37/54.00m.
- 5b *Discorbinella bertheloti* (d'Orbigny). Side view, umbilical side, Gulf of Gemlik, Marmara Sea, Station 37/54.00m.
- 6a *Discorbinella bertheloti* (d'Orbigny). Side view, spiral side, Dardanelles, Station 7/68.00m.
- 6b *Discorbinella bertheloti* (d'Orbigny). Side view, umbilical side, Dardanelles, Station 7/68.00m.
- 7 *Hyalinea balthica* (Schröter). Side view, Gulf of Saros, Aegean Sea, Station 7/90.00m.
- 8 *Hyalinea balthica* (Schröter). Side view, Erdek Bay, Marmara Sea, Station 166/46.00m.
- 9 *Hyalinea balthica* (Schröter). Side view, Gulf of Saros, Aegean Sea, Station 23/383.00m.
- 10 *Hyalinea balthica* (Schröter). Side view, Gulf of Saros, Aegean Sea, Station 23/383.00m.
- 11 *Planulina ariminensis* d'Orbigny. Side view, Gulf of Saros, Aegean Sea, Station 69/72.00m.
- 12 *Planulina ariminensis* d'Orbigny. Side view, Gulf of Edremit, Aegean Sea, Station 1/334.50m.
- 13 *Planulina ariminensis* d'Orbigny. Side view, Gulf of Edremit, Aegean Sea, Station 1/334.50m.
- 14 *Planulina ariminensis* d'Orbigny. Side view, Gulf of Saros, Aegean Sea, Station 12/214.70m.
- 15a *Cibicides advenum* (d'Orbigny). Side view, spiral side, Gökçeada, Aegean Sea, Station 32/16.00m.
- 15b *Cibicides advenum* (d'Orbigny). Side view, umbilical side, Gökçeada, Aegean Sea, Station 32/16.00m.
- 16 *Cibicides advenum* (d'Orbigny). Side view, umbilical side, north of Bosphorus, SW Black Sea, Station 10/63.00m.
- 17a *Cibicides advenum* (d'Orbigny). Side view, spiral side, Erdek Bay, Marmara Sea, Station 166/46.00m.
- 17b *Cibicides advenum* (d'Orbigny). Side view, umbilical side, Erdek Bay, Marmara Sea, Station 166/46.00m.
- 18a *Cibicides advenum* (d'Orbigny). Side view, spiral side, Gökçeada-Bozcaada-Çanakkale Triangle, Aegean Sea, Station 76/45.00m.
- 18b *Cibicides advenum* (d'Orbigny). Side view, umbilical side, Gökçeada-Bozcaada-Çanakkale Triangle, Aegean Sea, Station 76/45.00m.

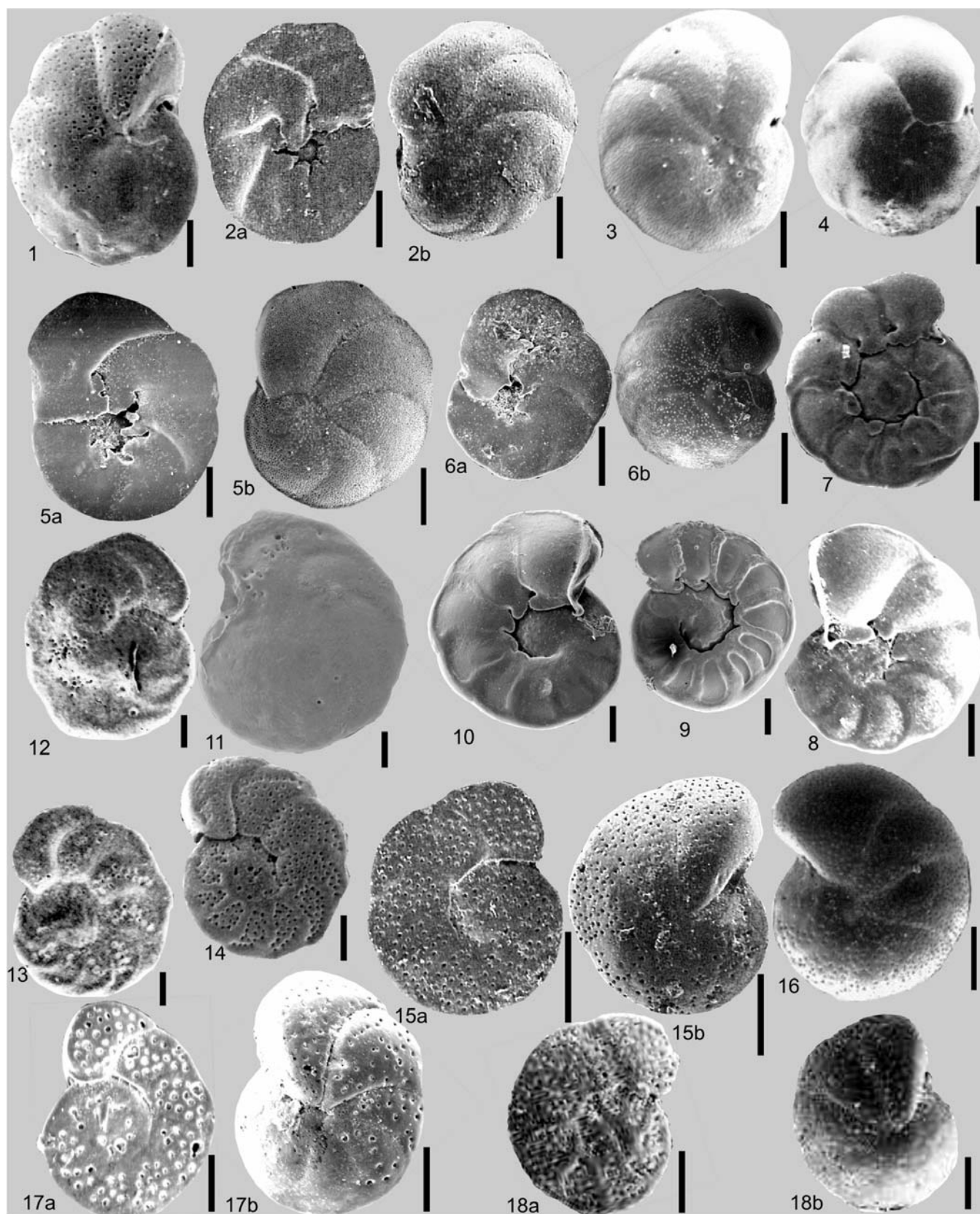


PLATE 60

- 1a *Cibicides floridanus* (Cushman). Side view, spiral side, Gulf of İzmit, Marmara Sea, Borehole S2/46.00–46.45m.
- 1b *Cibicides floridanus* (Cushman). Side view, umbilical side, Gulf of İzmit, Marmara Sea, Borehole S2/46.00–46.45m.
- 1c *Cibicides floridanus* (Cushman). Side view, enlarged part of the spiral side, Gulf of İzmit, Marmara Sea, Borehole S2/46.00–46.45m.
- 2 *Lobatula lobatula* (Walker & Jacob). Side view, umbilical side, Erdek Bay, Marmara Sea, Station 147/28.00m.
- 3 *Lobatula lobatula* (Walker & Jacob). Side view, umbilical side, Gulf of Saros, Aegean Sea, Station 17/33.90m.
- 4a *Lobatula lobatula* (Walker & Jacob). Side view, spiral side, Gökçeada, Aegean Sea, Station 32/16.00m.
- 4b *Lobatula lobatula* (Walker & Jacob). Side view, umbilical side, Gökçeada, Aegean Sea, Station 32/16.00m.
- 5a *Lobatula lobatula* (Walker & Jacob). Side view, spiral side, Dikili Bay, Aegean Sea, Station 8/35.80m.
- 5b *Lobatula lobatula* (Walker & Jacob). Side view, umbilical side, Dikili Bay, Aegean Sea, Station 8/35.80m.
- 6 *Lobatula lobatula* (Walker & Jacob). Side view, spiral side, Gulf of Antalya, Mediterranean, Station 21/60.00m.
- 7 *Lobatula lobatula* (Walker & Jacob). Side view, spiral side, Gulf of Antalya, Mediterranean, Station 21/60.00m.
- 8 *Lobatula lobatula* (Walker & Jacob). Side view, spiral side, Gulf of Saros, Harmantaşı, Aegean Sea, Line 1/20.00m.
- 9a *Lobatula lobatula* (Walker & Jacob). Side view, spiral side, Üçadalar, Antalya, Mediterranean, Station 127/21.00m.
- 9b *Lobatula lobatula* (Walker & Jacob). Side view, umbilical side, Üçadalar, Antalya, Mediterranean, Station 127/21.00m.
- 10 *Lobatula lobatula* (Walker & Jacob). Side view, spiral side, Ayvalık, Aegean Sea, Core 2C/0–2cm.
- 11 *Lobatula lobatula* (Walker & Jacob). Side view, spiral side, Gulf of Saros, Harmantaşı, Aegean Sea, central region, 20.10m.
- 12 *Lobatula lobatula* (Walker & Jacob). Side view, spiral side, Gulf of Saros, Harmantaşı, Aegean Sea, central region, 20.10m.
- 13 *Lobatula lobatula* (Walker & Jacob). Side view, umbilical side, Ayvalık, Aegean Sea, Core 2C/0–2cm.
- 14a *Lobatula lobatula* (Walker & Jacob). Side view, spiral side, Dardanelles, Station 5/25.01m.
- 4b *Lobatula lobatula* (Walker & Jacob). Side view, umbilical side, Dardanelles, Station 5/25.00m.

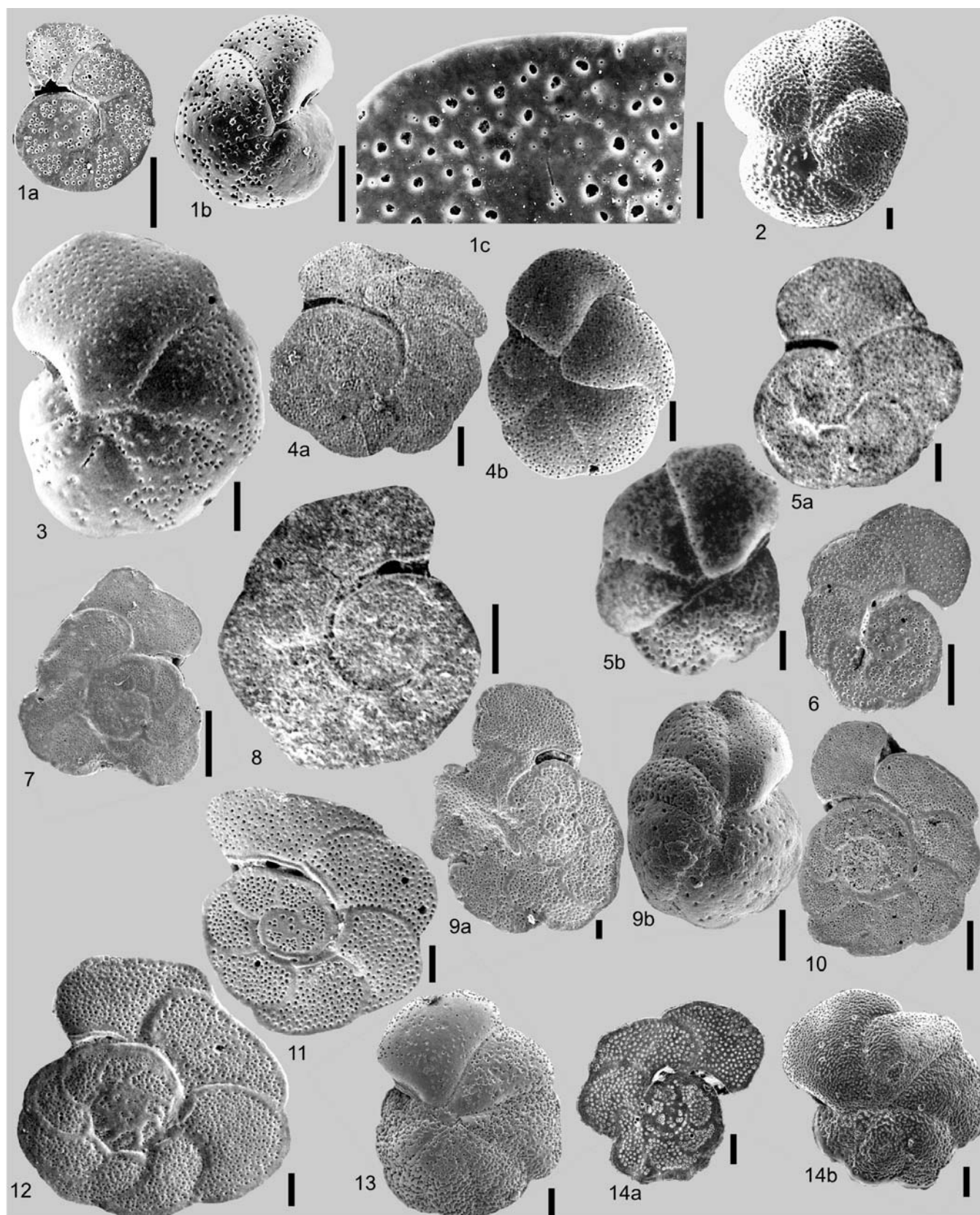


PLATE 61

- 1 *Cyclocibicides vermiculatus* (d'Orbigny). Attached side view, Gökçeada, Aegean Sea, Station 25/25.00m.
- 2 *Cyclocibicides vermiculatus* (d'Orbigny). Unattached side view, Gökçeada, Aegean Sea, Station 25/25.00m.
- 3 *Cyclocibicides vermiculatus* (d'Orbigny). Unattached side view, Kuşadası, Aegean Sea, Station 8/12.30m.
- 4 *Cyclocibicides vermiculatus* (d'Orbigny). Attached side view, Kuşadası, Aegean Sea, Station 8/12.30m.
- 5 *Planorbulina mediterranensis* d'Orbigny. Unattached side view, Gulf of Saros, Aegean Sea, Station 54/94.50m.
- 6 *Planorbulina mediterranensis* d'Orbigny. Attached side view, Gulf of Saros, Aegean Sea, Station 54/94.50m.
- 7 *Planorbulina mediterranensis* d'Orbigny. Unattached side view, Gökçeada, Aegean Sea, Station 32/16.00m.
- 8 *Planorbulina mediterranensis* d'Orbigny. Unattached side view, Gökçeada, Aegean Sea, Station 32/16.00m.
- 9 *Planorbulina mediterranensis* d'Orbigny. Unattached side view, Dikili Bay, Aegean Sea, Station 3/18.50m.
- 10 *Planorbulina mediterranensis* d'Orbigny. Attached side view, Çandarlı Bay, Aegean Sea, Station 14/21.00m.
- 11 *Planorbulina mediterranensis* d'Orbigny. Unattached side view, Gulf of Antalya, Mediterranean, Station 11/80.00m.
- 12 *Planorbulina mediterranensis* d'Orbigny. Unattached side view, Ayvalık, Aegean Sea, Core 2C/12–14cm.
- 13 *Planorbulina mediterranensis* d'Orbigny. Attached side view, Ayvalık, Aegean Sea, Core 2C/12–14cm.
- 14 *Planorbulina mediterranensis* d'Orbigny. Attached side view, Kekova, Antalya Mediterranean, Station 88/5.00m.
- 15a *Cibicidella variabilis* (d'Orbigny). External view, spiral side, Gökçeada, Aegean Sea, Station 25/25.00m.
- 15b *Cibicidella variabilis* (d'Orbigny). External view, spiral side, detail view of the aperture, Gökçeada, Aegean Sea, Station 25/25.00m.
- 16 *Cibicidella variabilis* (d'Orbigny). External view, umbilical side, Gökçeada, Aegean Sea, Station 25/25.00m.

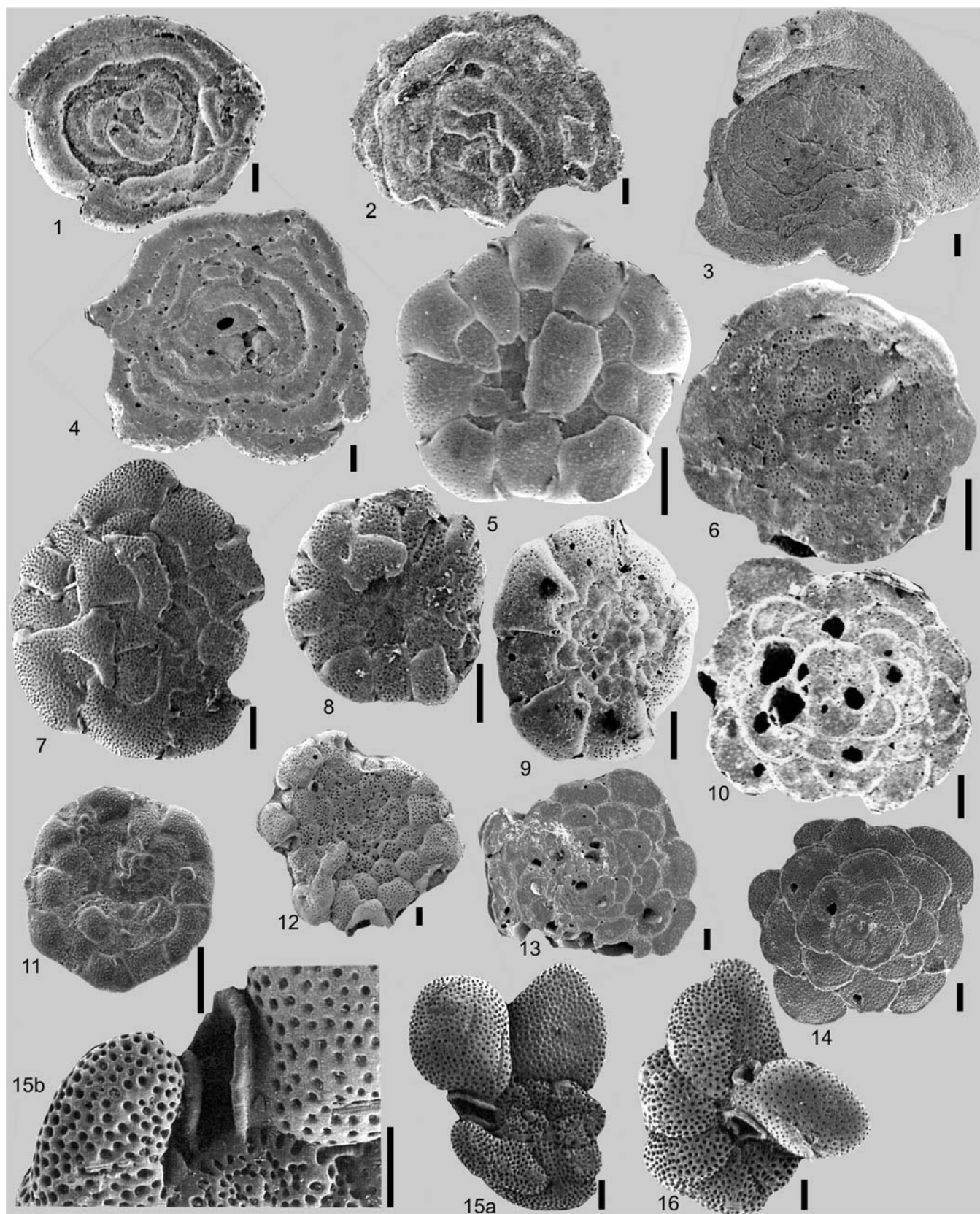


PLATE 62

- 1 *Cibicidella variabilis* (d'Orbigny). Side view, umbilical side, Dikili Bay, Aegean Sea, Station 5/18.00m.
- 2 *Cibicidella variabilis* (d'Orbigny). Side view, spiral side, Kaş, Antalya, Mediterranean, Station 55/14.00m.
- 3 *Cibicidella variabilis* (d'Orbigny). Side view, umbilical side, Kaş, Antalya Mediterranean, Station 55/24.00m.
- 4 *Cibicidella variabilis* (d'Orbigny). Side view, umbilical side, Kekova, Antalya Mediterranean, Station 99/12.00m.
- 5 *Cibicidella variabilis* (d'Orbigny). Side view, spiral side, Gulf of Kuşadası, Aegean Sea, Station 37/15.90m.
- 6 *Cibicidella variabilis* (d'Orbigny). Side view, spiral side, Gulf of Kuşadası, Aegean Sea, Station 37/15.90m.
- 7 *Cibicidella variabilis* (d'Orbigny). Side view, spiral side, Gulf of Kuşadası, Aegean Sea, Station 37/15.90m.
- 8 *Cibicidella variabilis* (d'Orbigny). Side view, umbilical side, Ayvalık, Aegean Sea, Core 2C/10–12cm.
- 9 *Cibicidella variabilis* (d'Orbigny). Side view, spiral side, Ayvalık, Aegean Sea, Core 2C/10–12cm.
- 10 *Cibicidella variabilis* (d'Orbigny). Side view, spiral side, Ayvalık, Aegean Sea, Core 2C/18–20cm.
- 11 *Cymbaloporeta plana* (Cushman). Side view, spiral side, Üçadalar, Antalya, Mediterranean, Station 119/24.00m.
- 12 *Cymbaloporeta plana* (Cushman). Side view, umbilical side, Kaş, Antalya, Mediterranean, Station 73/8.00m.
- 13 *Cymbaloporeta plana* (Cushman). Edge view, Kaş, Antalya, Mediterranean Station 73/8.00m.
- 14 *Cymbaloporeta plana* (Cushman). Side view, spiral side, Gulf of Kuşadası, Aegean Sea, Station 35/14.40m.
- 15 *Cymbaloporeta squamosa* (d'Orbigny). Side view, spiral side, Kekova, Antalya, Mediterranean, Station 84/12.00m.
- 16 *Cymbaloporeta squamosa* (d'Orbigny). Edge view, Kekova, Antalya, Mediterranean, Station 84/10.00m.