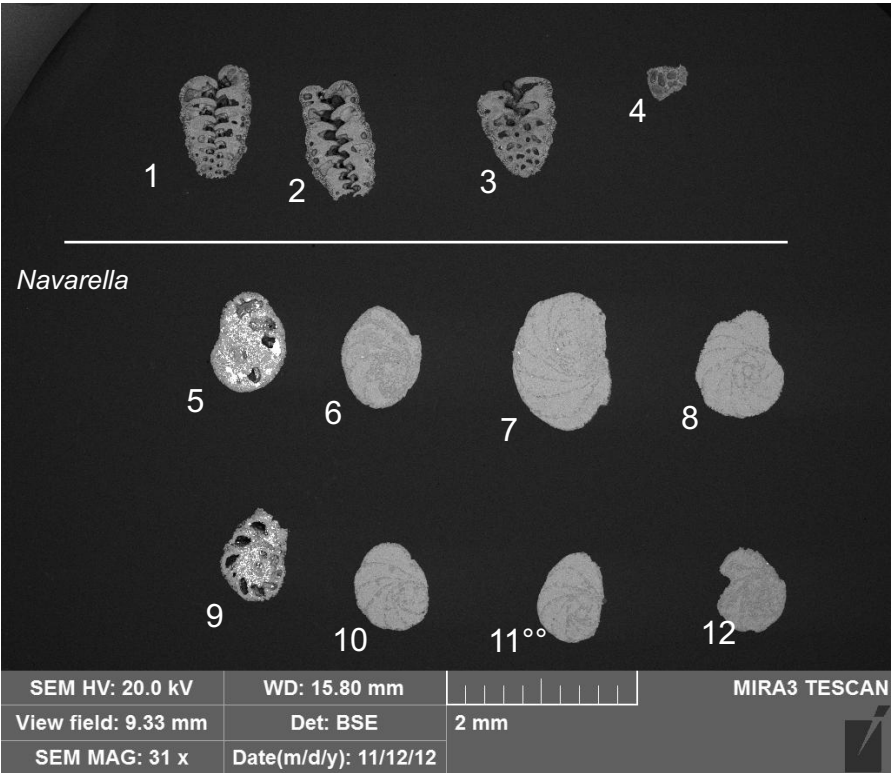
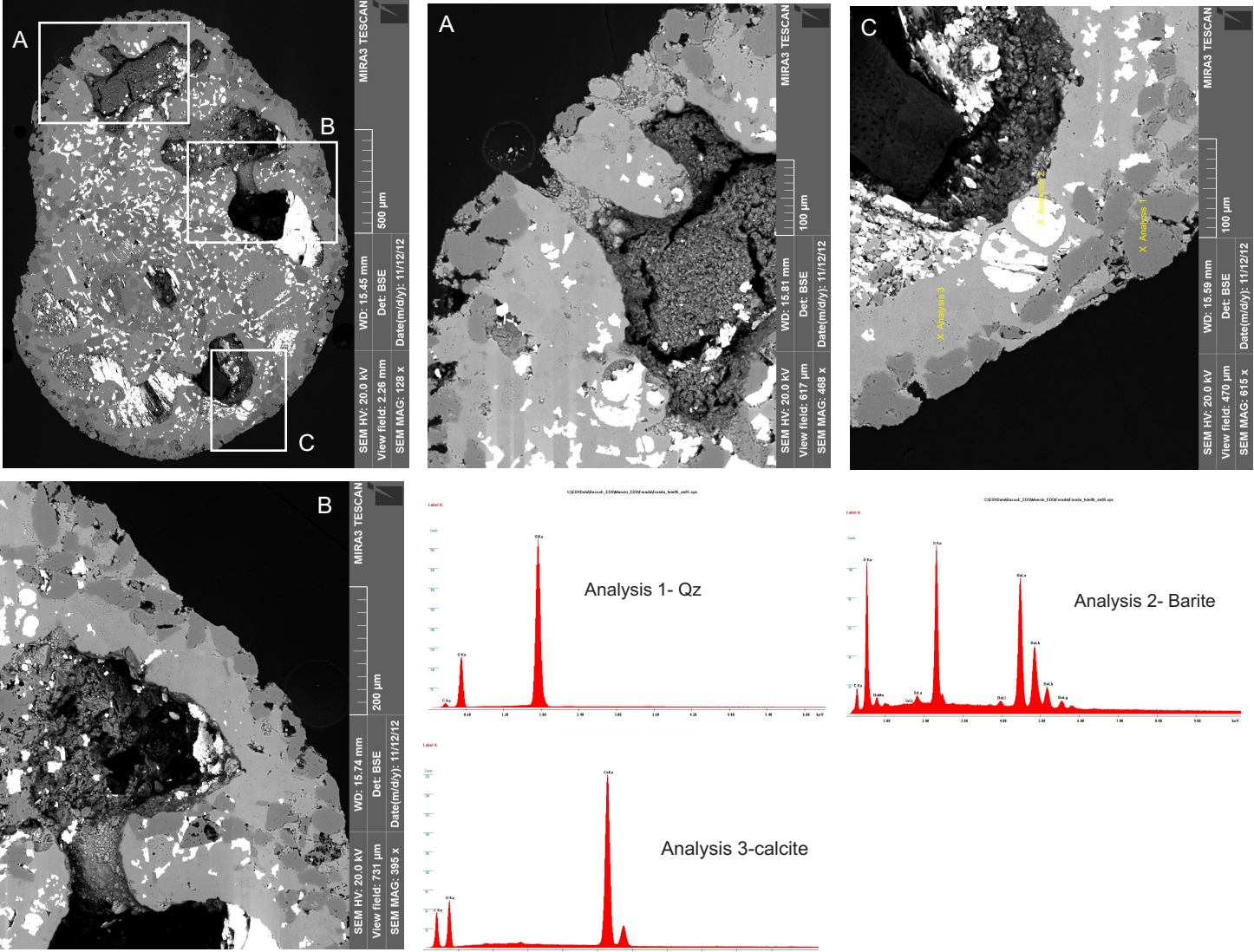


EDS analysis (stub 2)

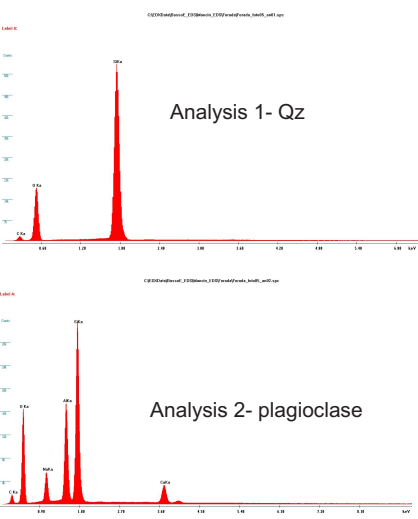
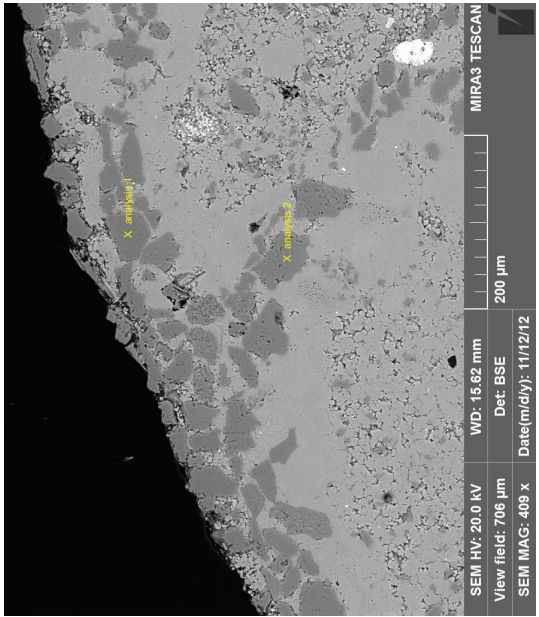
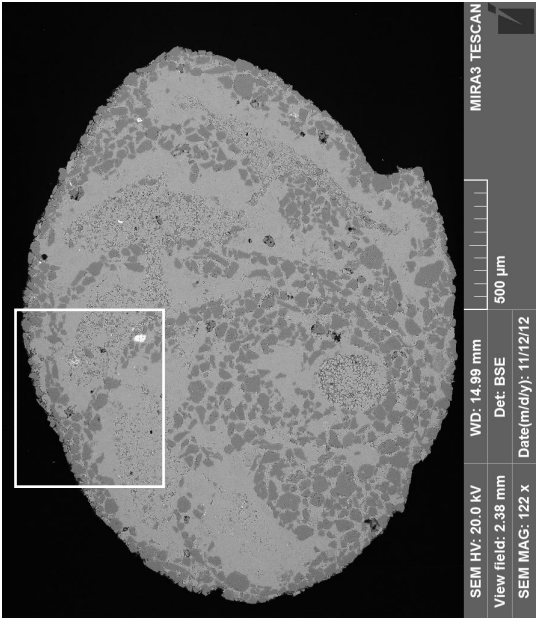
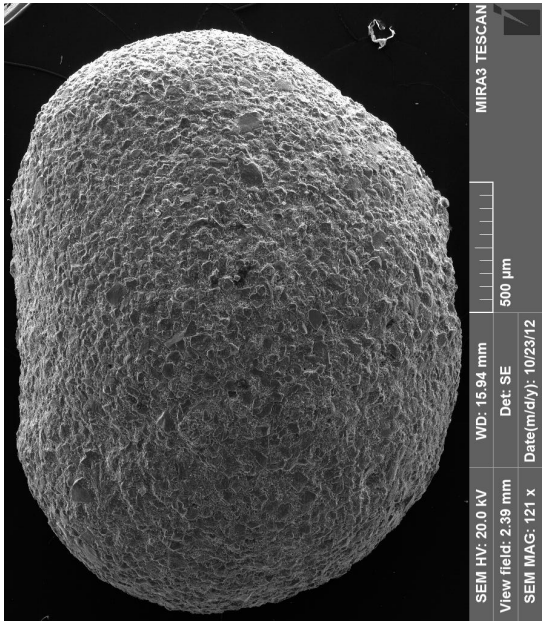


Specimen 5 (sample BRI-14,5; Forada)

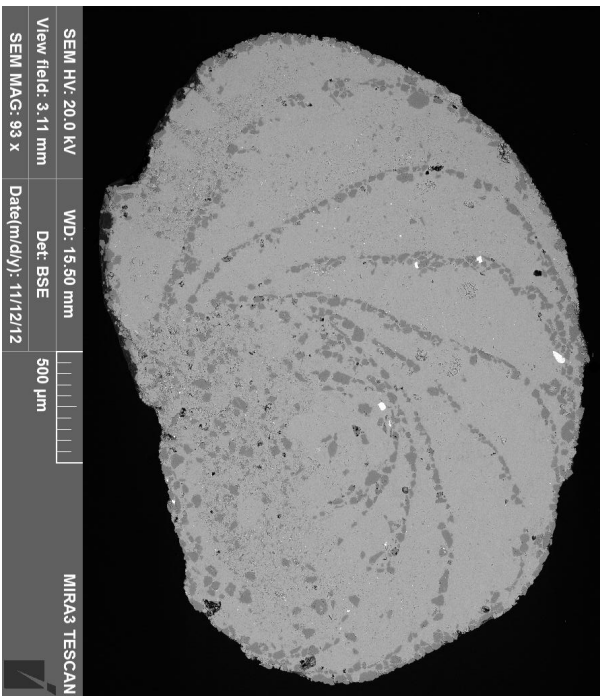
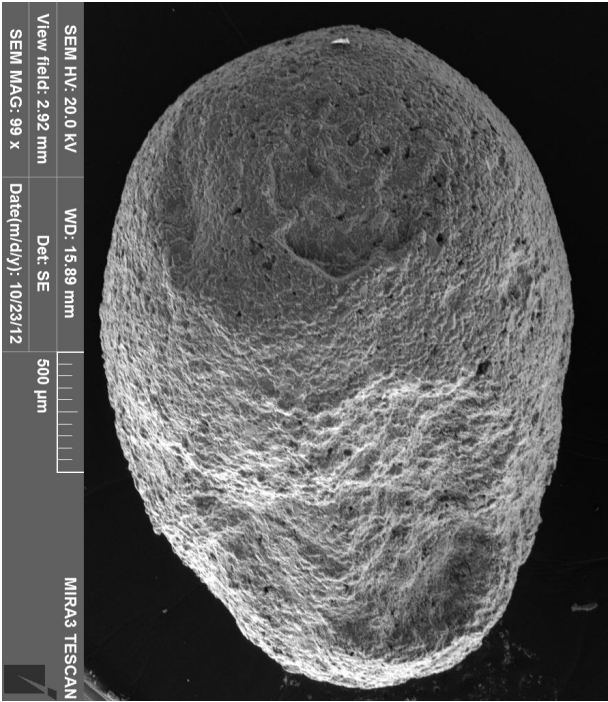


^{oo} The specimen 11 was not analysed.

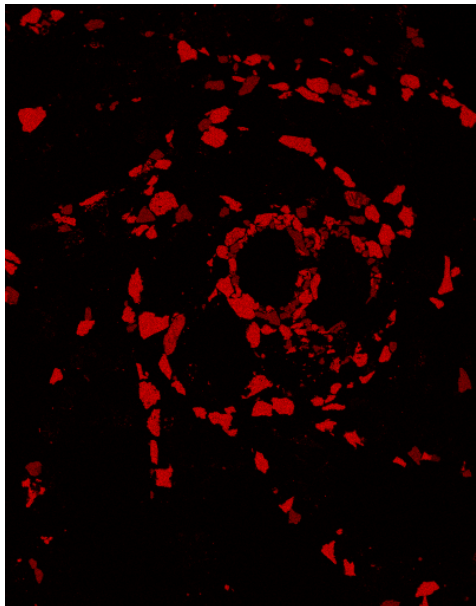
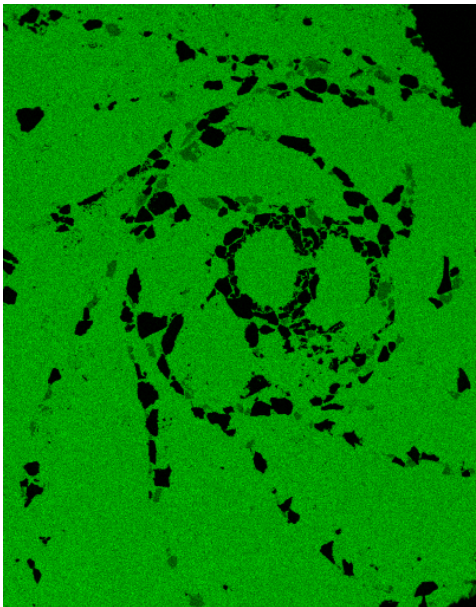
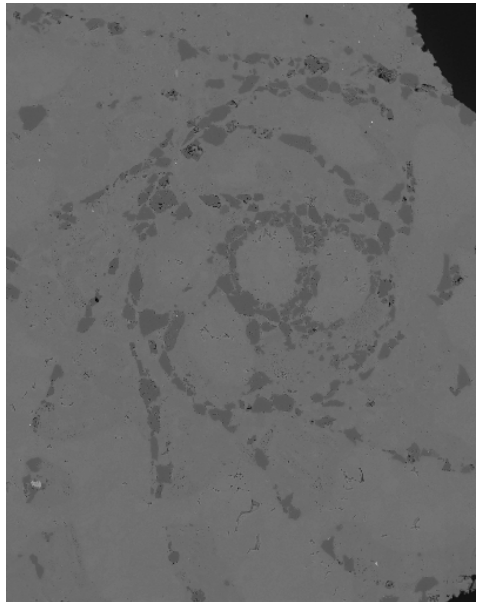
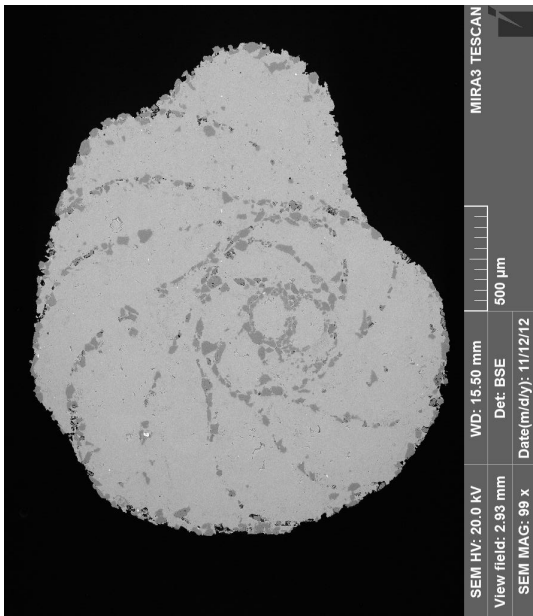
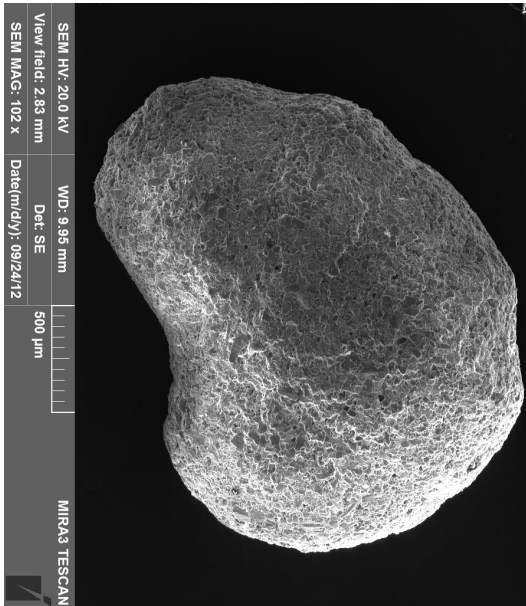
Specimen 6 (sample BRI-37; Forada)



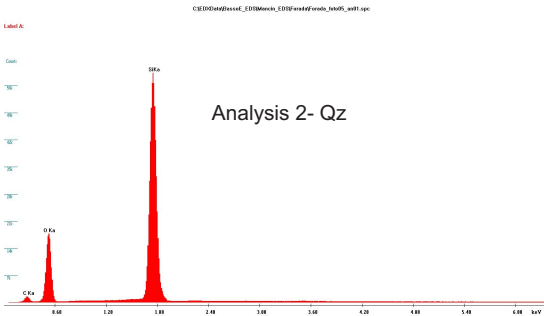
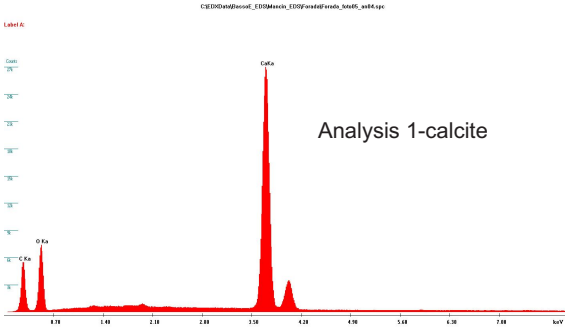
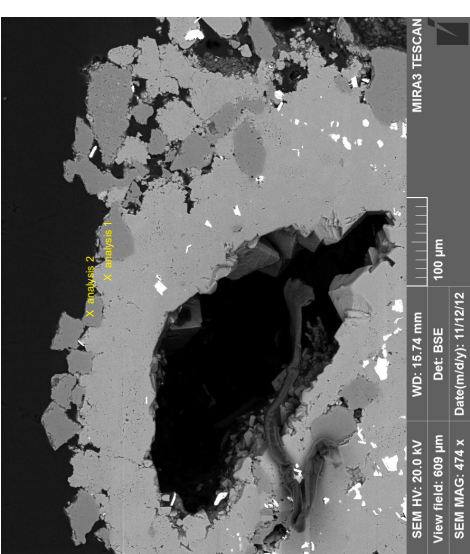
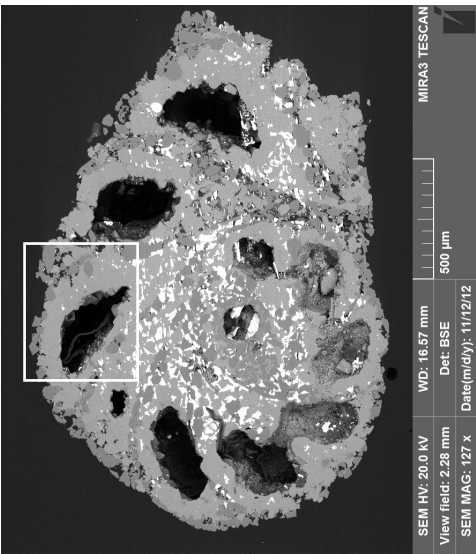
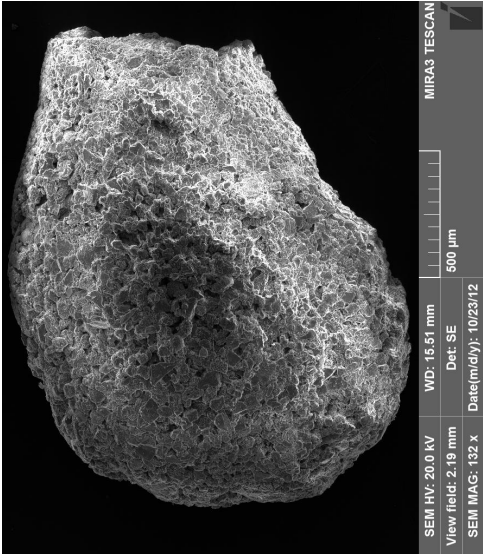
Specimen 7 (sample BRI-466; Forada)



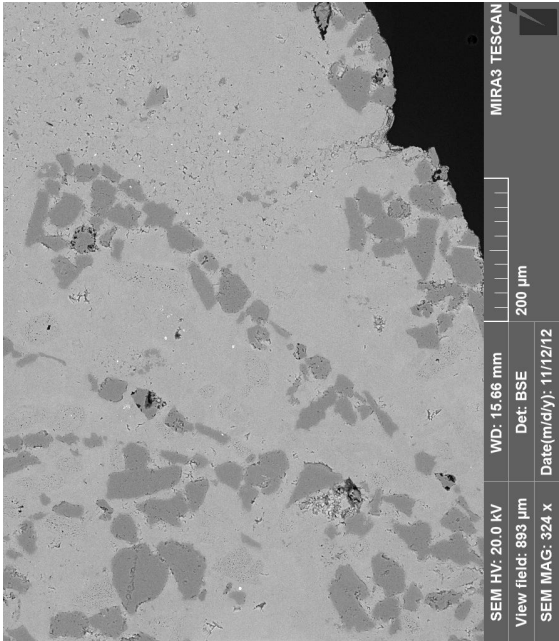
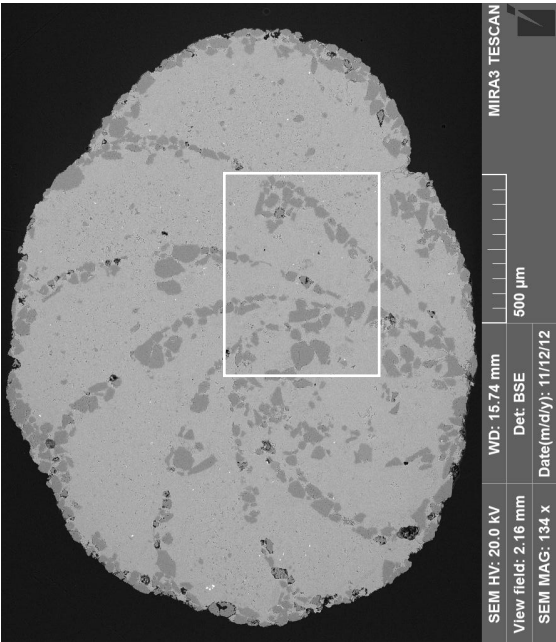
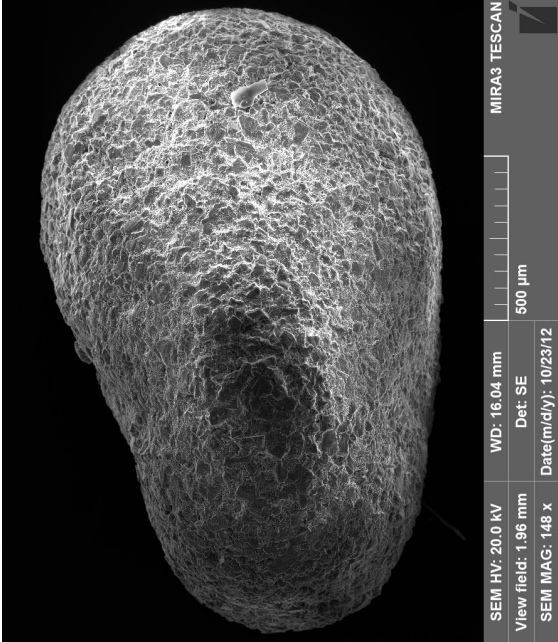
Specimen 8 (sample BRI-9; Forada)



Specimen 9 (sample BRI-9; Forada)



Specimen 10 (sample BRI-9; Forada)



Specimen 12 (sample BRI-310,5; Forada)

