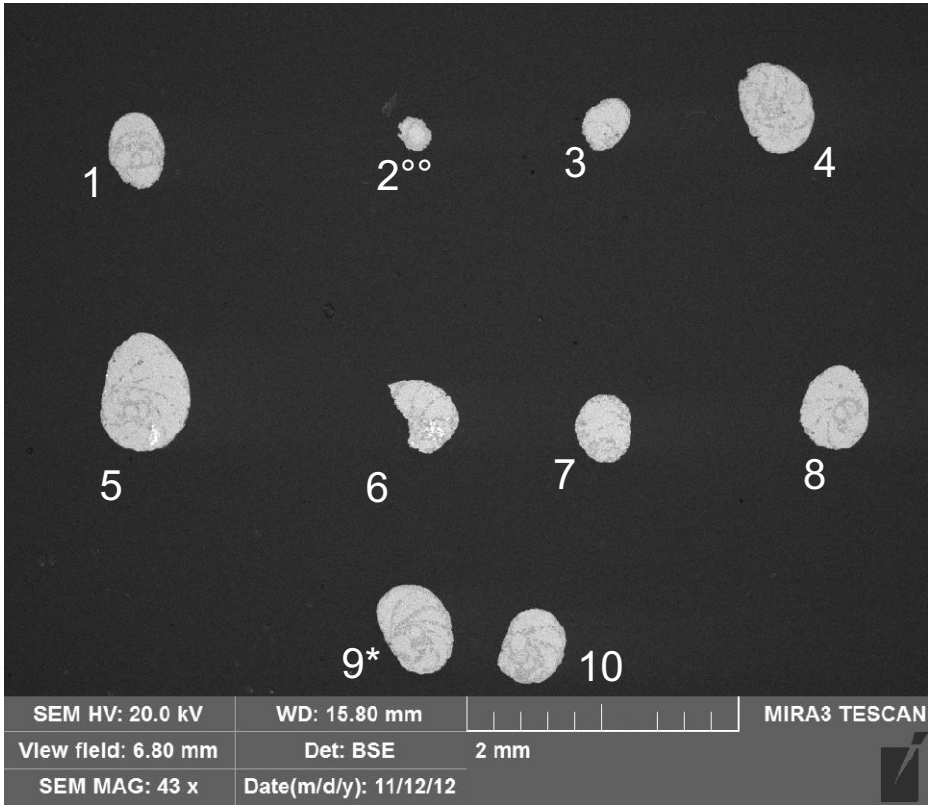
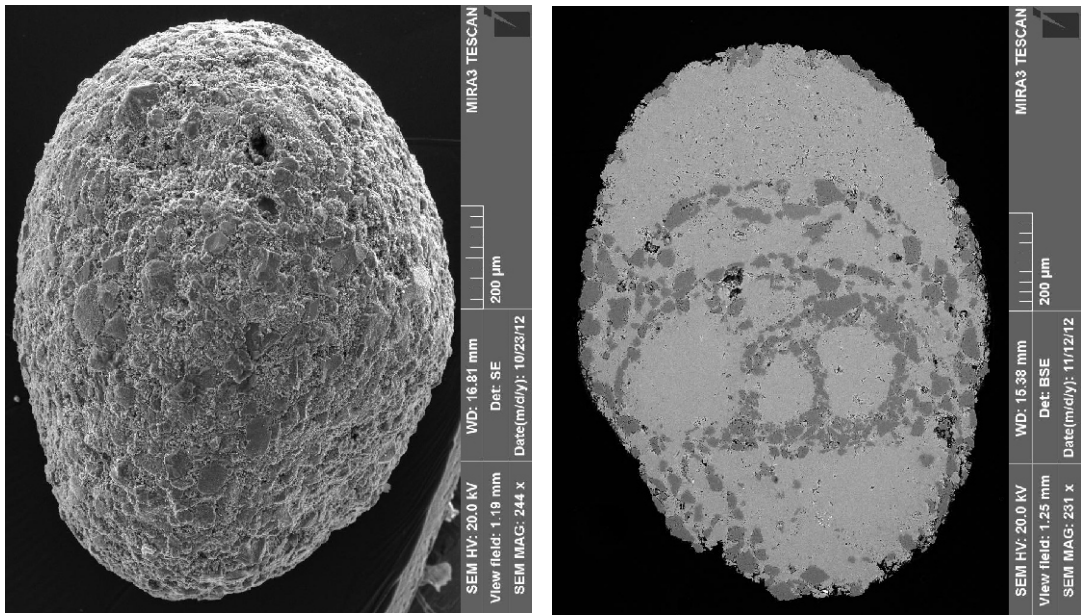


EDS analysis (stub 3)

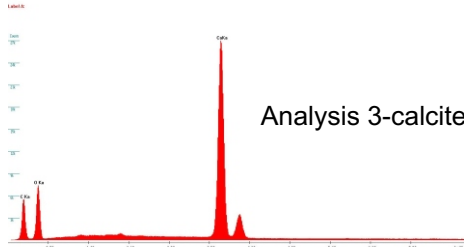
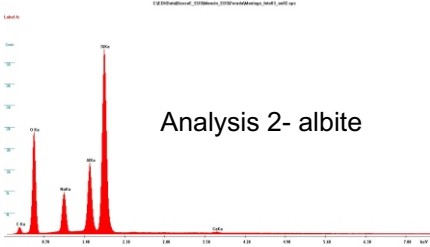
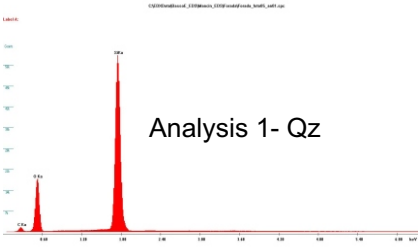
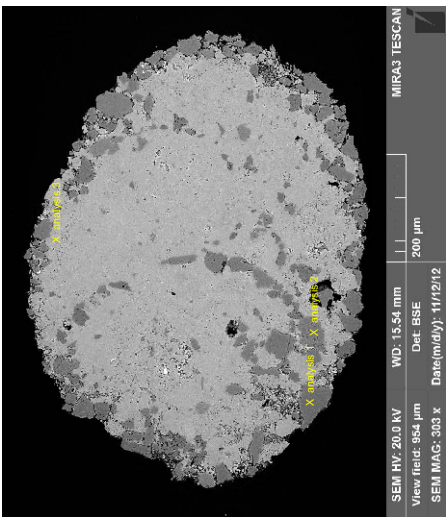
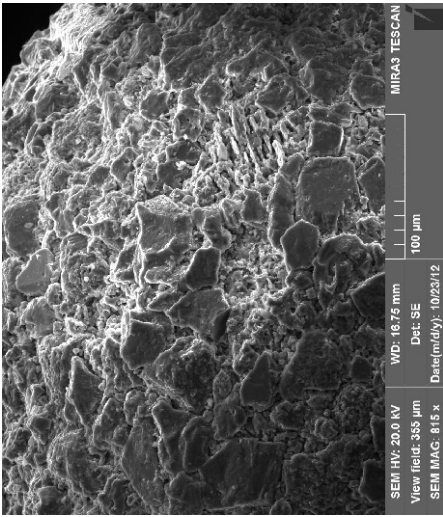
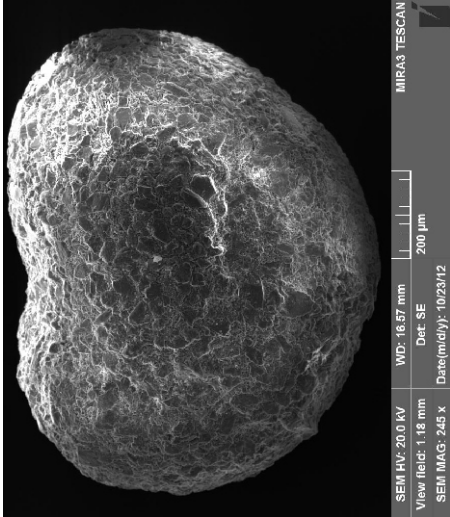


Specimen 1 (sample BRI-42,5; Forada)

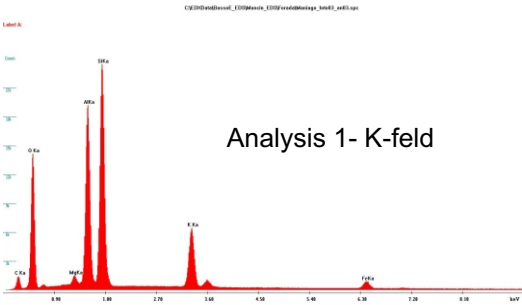
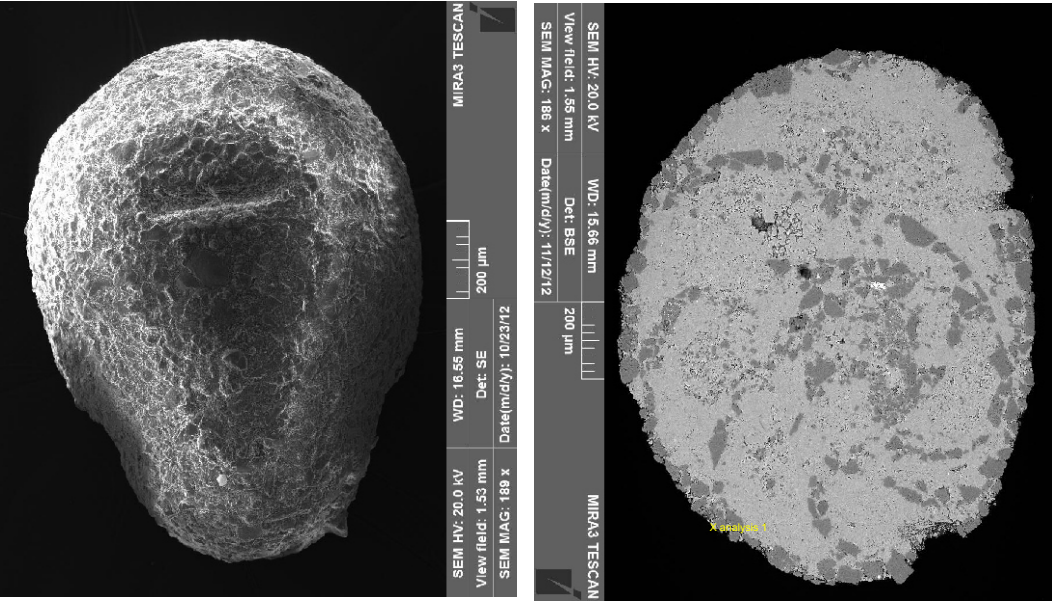


* SEM-EDS data relative to the specimen 9 are reported and described in text-figure 4.
°° Specimen 2 was not analysed.

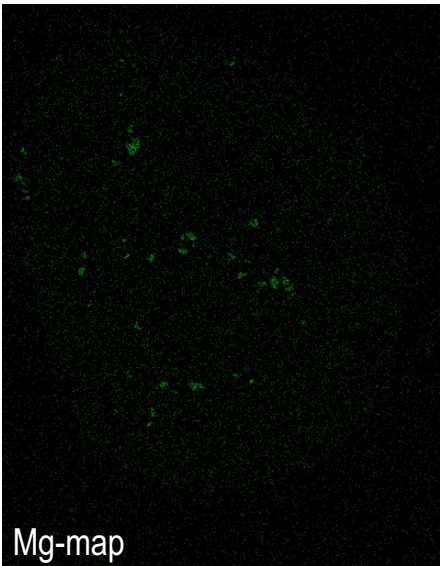
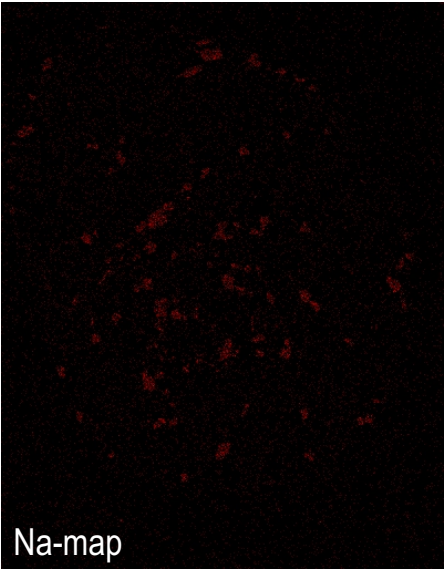
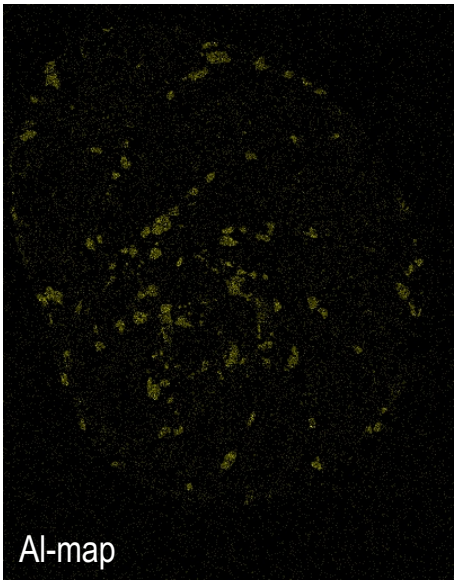
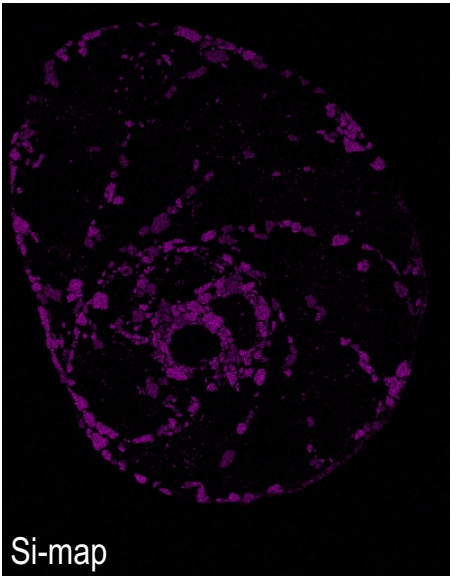
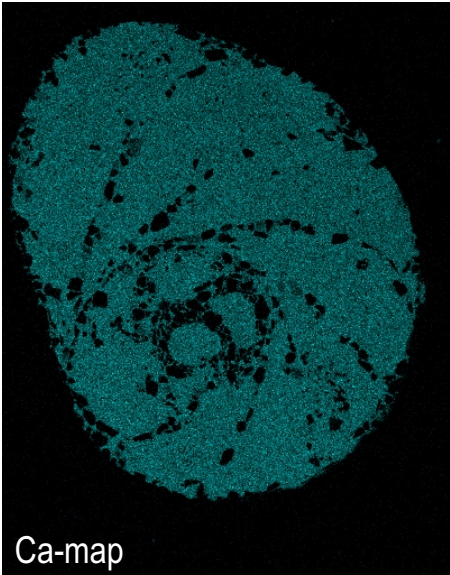
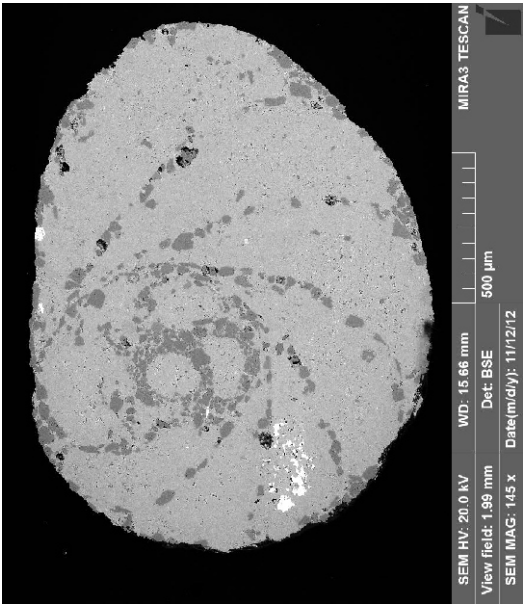
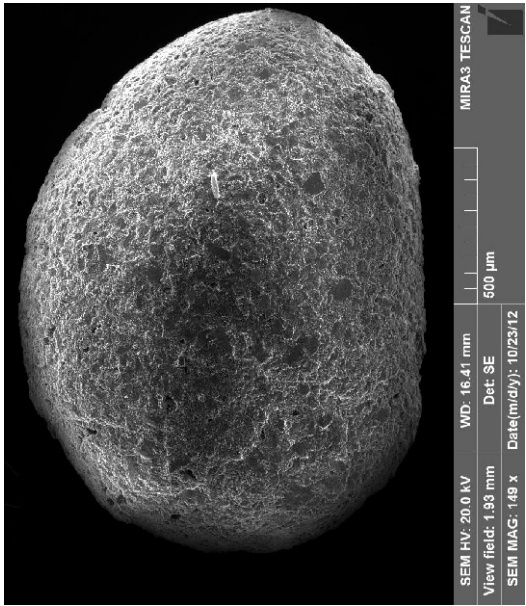
Specimen 3 (sample BRI-365; Forada)

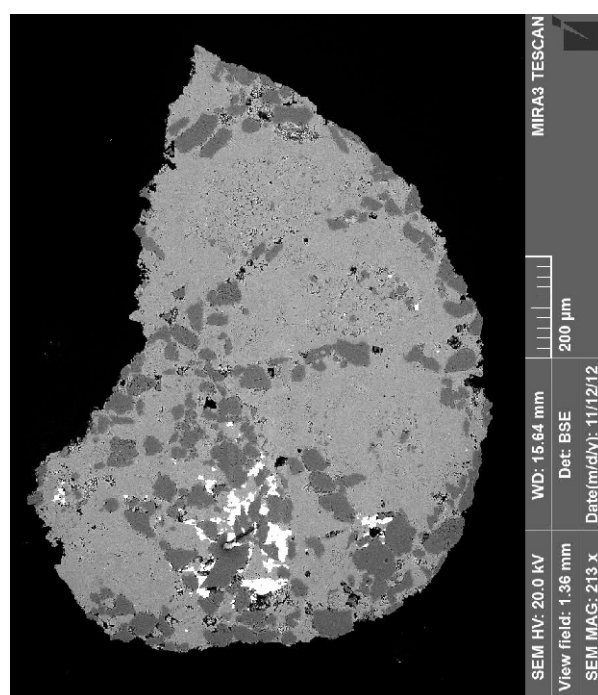
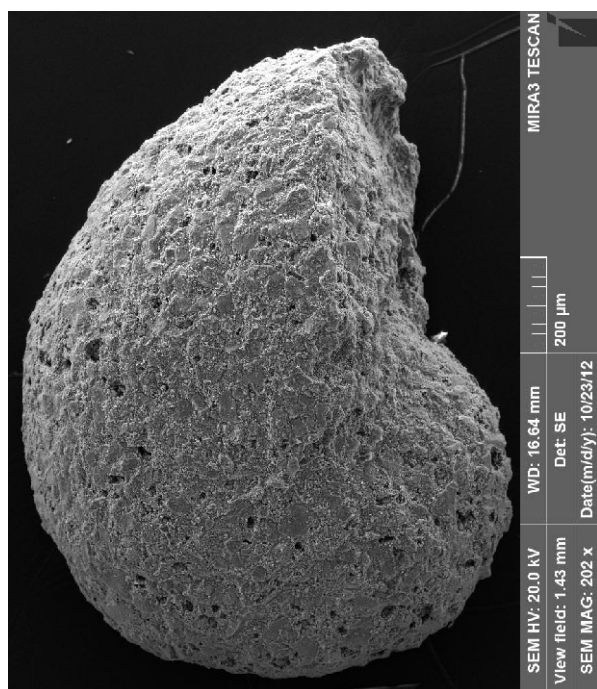


Specimen 4 (sample BRI-526; Forada)

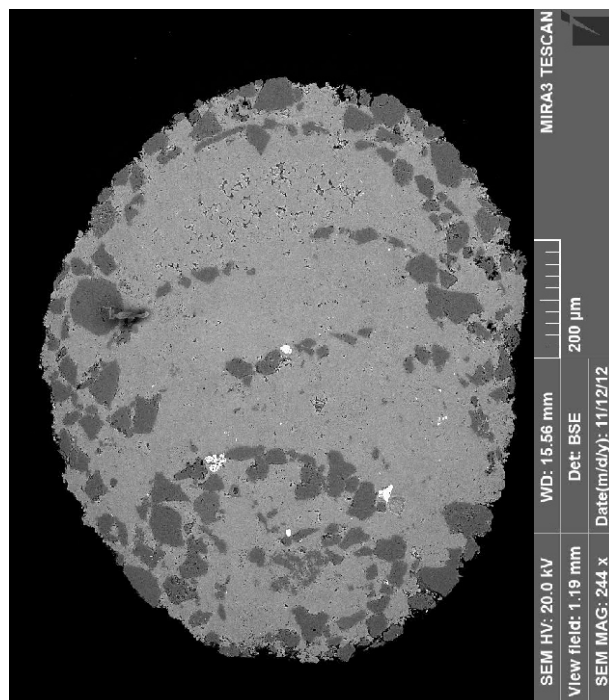
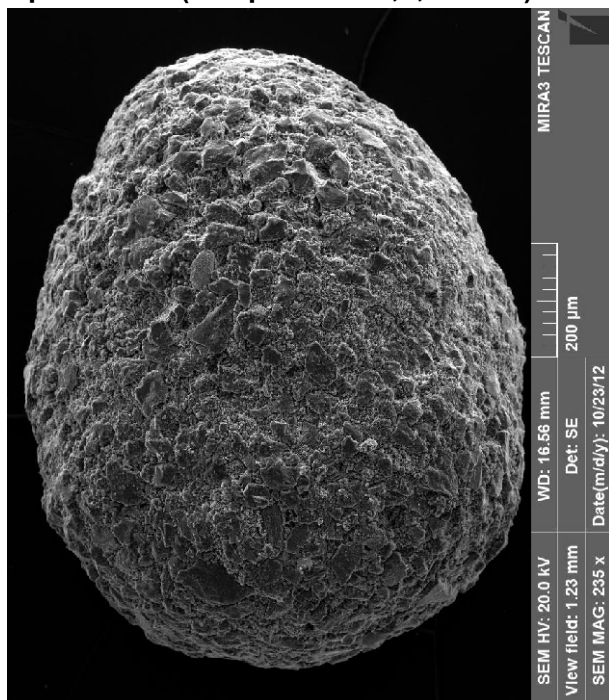


Specimen 5 (sample BRI-11; Forada)

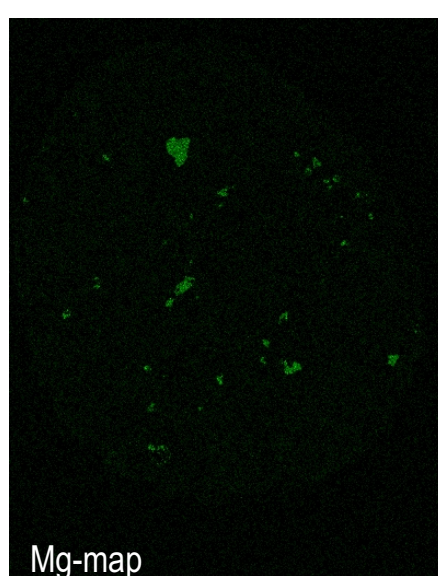
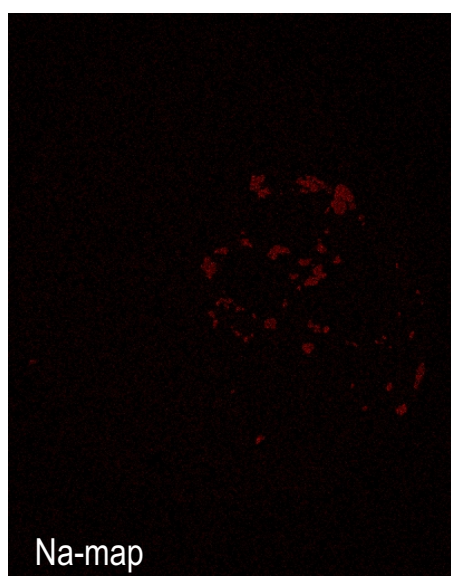
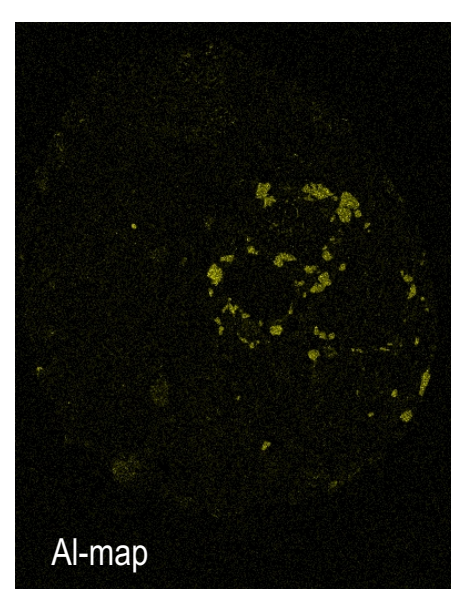
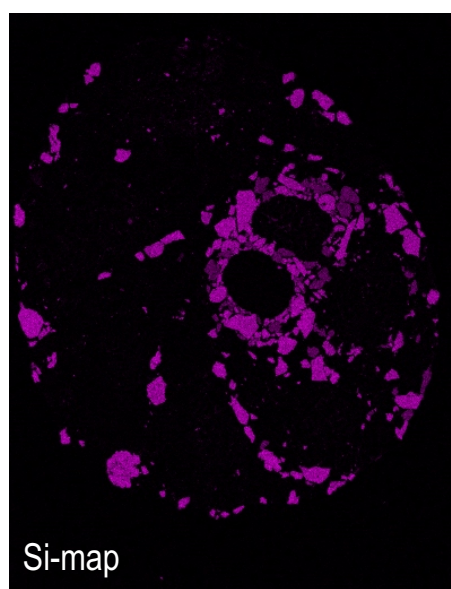
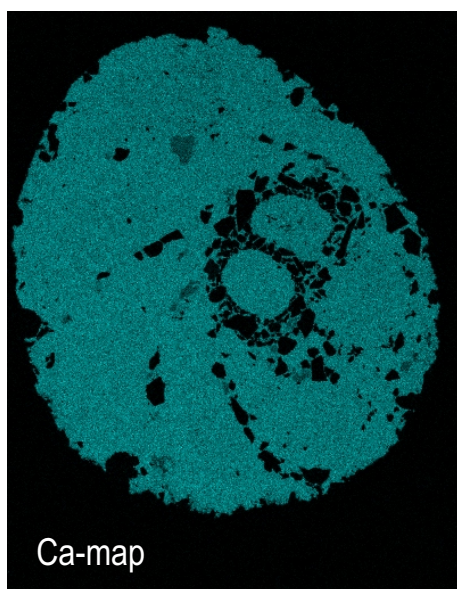
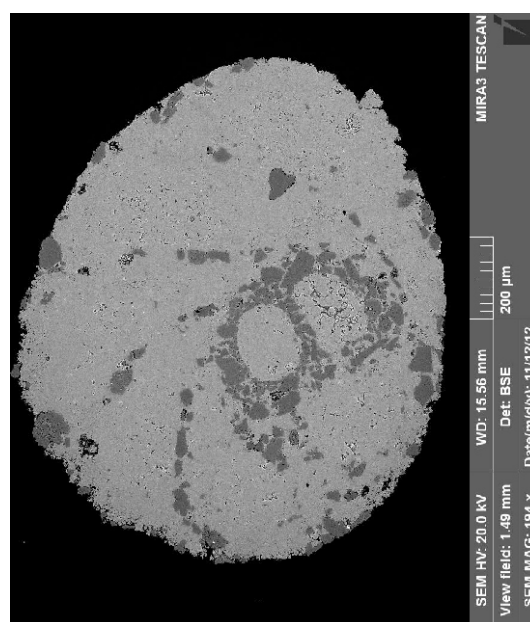
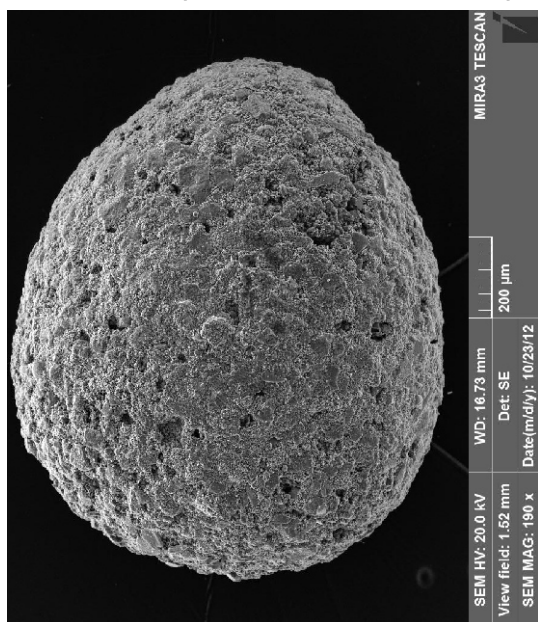


Specimen 6 (sample BRI-11; Forada)

Specimen 7 (sample BRI-35,5;Forada)



Specimen 8 (sample BRI-37; Forada)



Specimen 10 (sample BRI-9; Forada)

